

Arch.: Delugan Meissl Associated Architects, Vienna, Austria



# EQUITONE

Fibre cement facade materials



**Approved installer of Equitone | South Africa**

Web: [www.mrc-group.co.za](http://www.mrc-group.co.za)

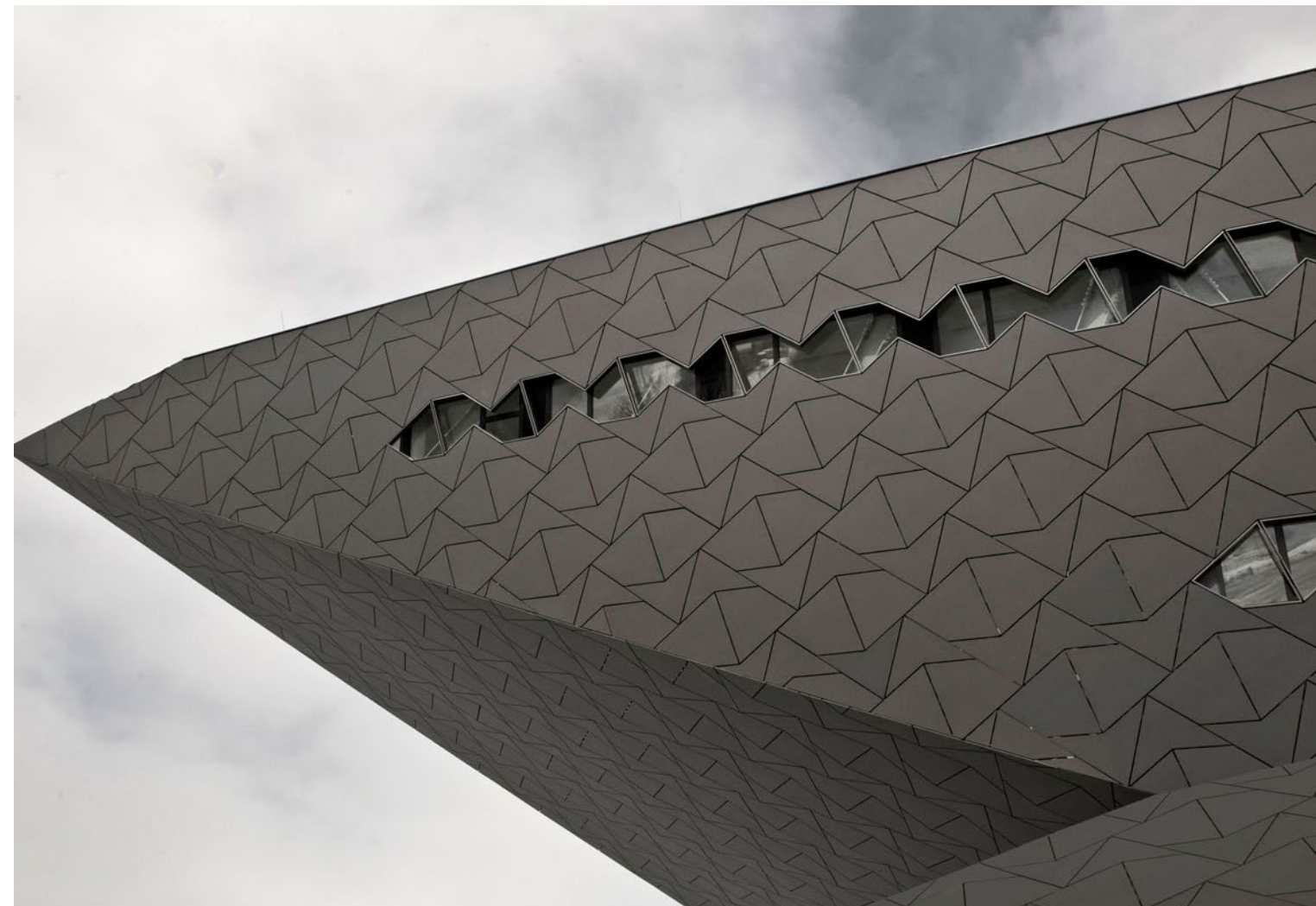
Email: [info@mrc-group.co.za](mailto:info@mrc-group.co.za)

Tel: +27 (0) 861 672 476

Offices: Johannesburg | Durban | Cape Town



EQUITONE is a through-coloured facade material designed by and for architects. Our company has produced these façade panels since the 1950´s under the name "Eternit". Every EQUITONE panel is unique, showing the raw, untreated texture of the fibre cement base material. Fibre cement is a cement composite material that consists of cement, cellulose and mineral materials, reinforced by a visible matrix. Nothing else. Visible and invisible rainscreen fixing methods can be used including riveting, screwing and bonding on metal or wood supporting frames. No matter what design options you explore, the through-coloured nature of EQUITONE assures crisp, monolithic details.



# Design potential

EQUITONE facade materials offer unparalleled design flexibility. The fibre cement material is through-coloured, which means the surface displays the inner texture and colour of the core fibre cement material. No matter what facade design options you explore, the through-coloured materials can be transformed into crisp, monolithic facade details.

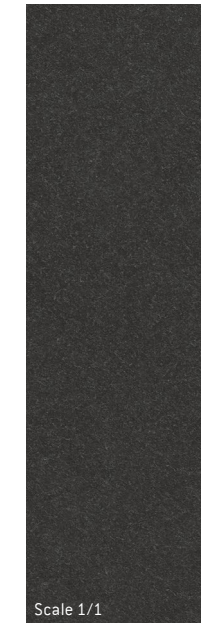
EQUITONE facade materials come in a maximum panel size of 1.25 x 3m (4' x 10') and can be transformed into any size or shape using standard tools in the workshop or on site. The material can be perforated using waterjet or CNC machines, large or very small cuts can be made, it can even be embossed and printed. Some designers have used it for interiors or furniture. The through-coloured material allows you to achieve flawless intricate details.



EQUITONE [tectiva]



EQUITONE [linea]



EQUITONE [natura]



EQUITONE [materia]



EQUITONE [pictura]

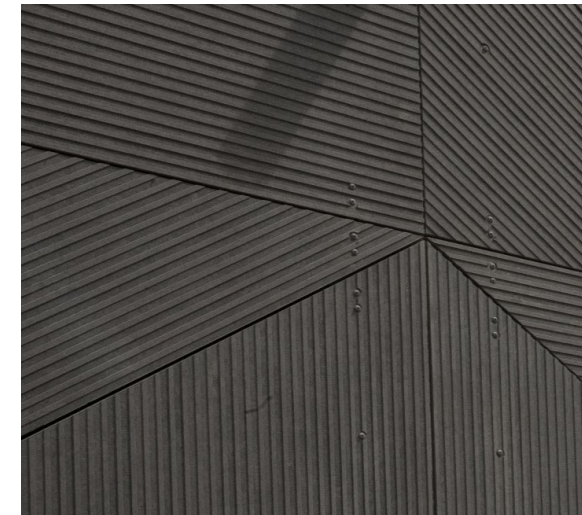
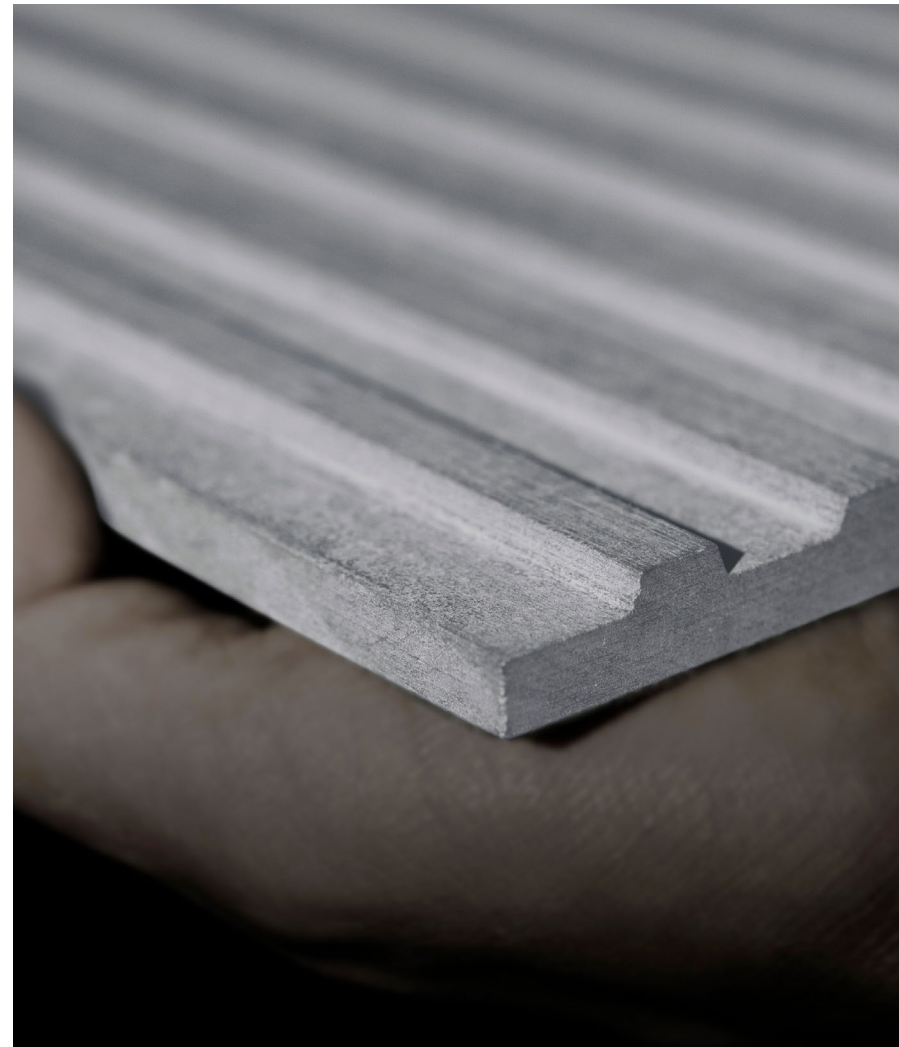


EQUITONE [textura]

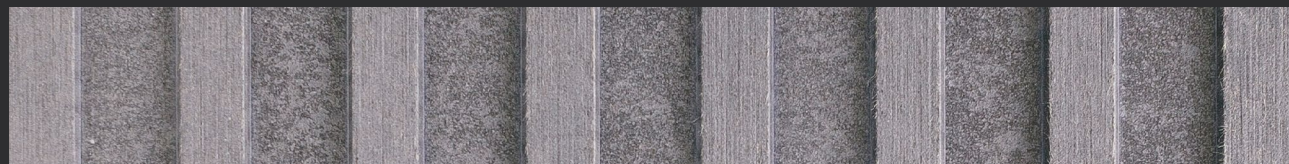


# EQUITONE [ linea ]

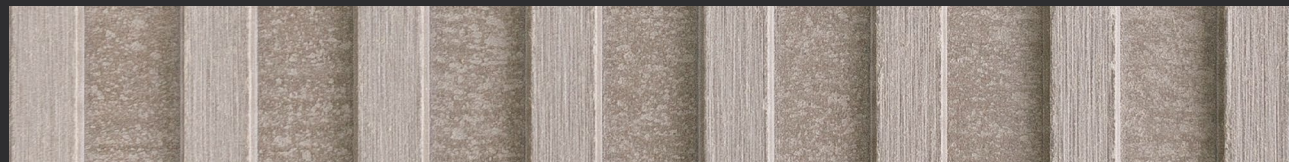
EQUITONE [linea] is a unique 3D shaped, through-coloured facade material that plays with light and shadow. EQUITONE [linea] displays a linear texture that highlights the raw inner texture of the core fibre cement material. Every moment of the day, the changing angle of the daylight gives the facade material a different aspect. The material comes in a large panel size and can be transformed into any size or shape in the workshop or on site. No matter what design options you explore, EQUITONE's through-coloured nature guarantees crisp, monolithic details. Both visible and invisible fixing options exist for EQUITONE [linea].



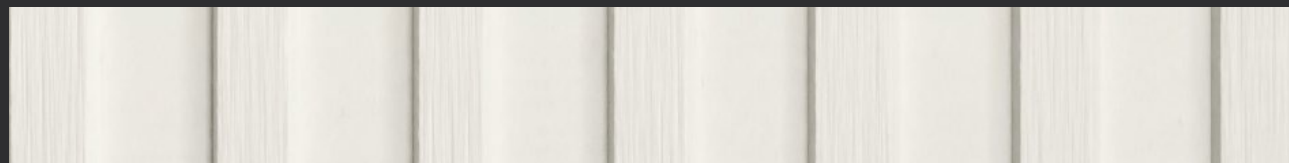




LT20



LT60



LT90

Shadow effect:

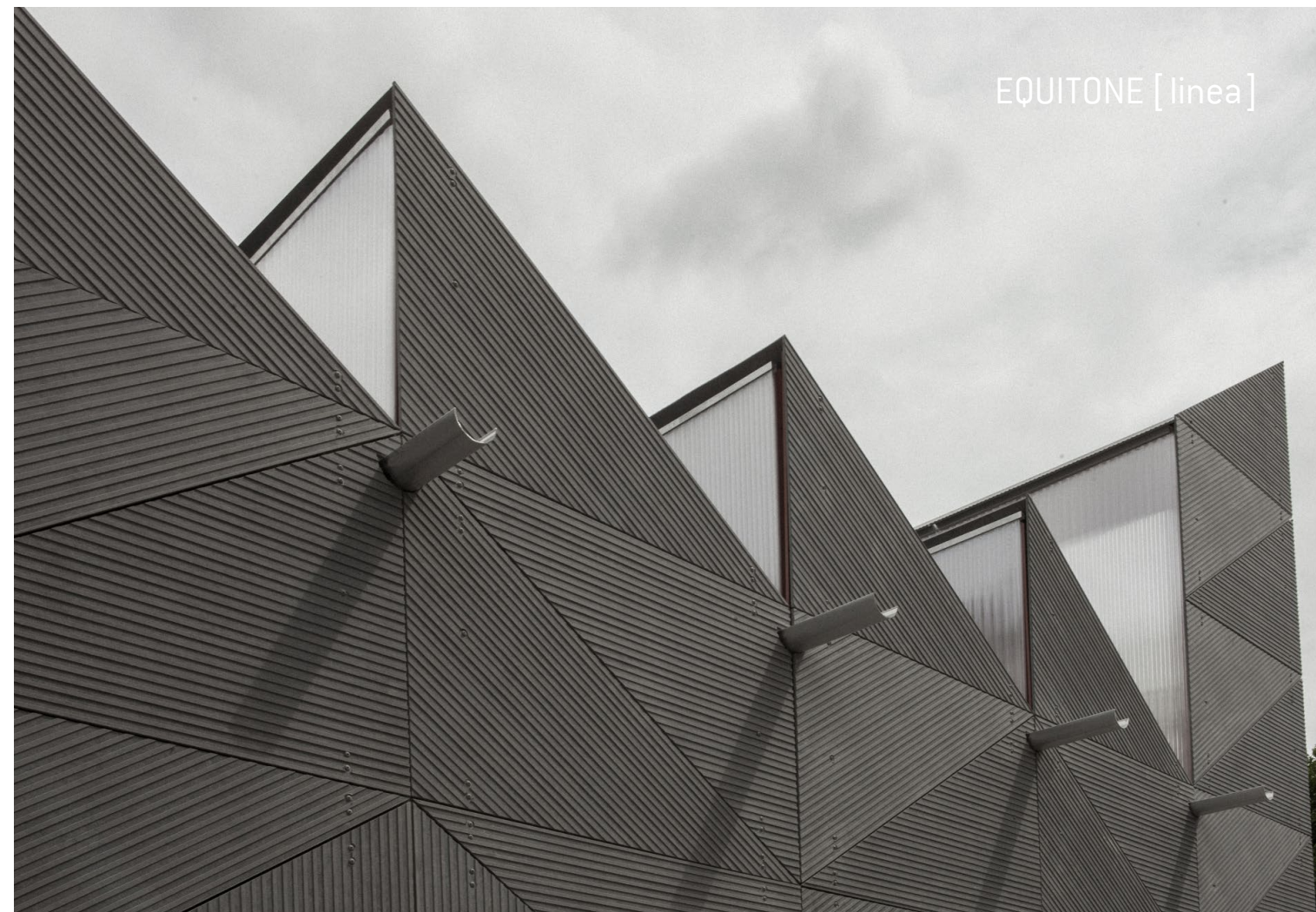
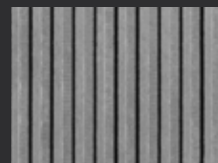
8:00 AM

9:00 AM

10:00 AM

11:00 AM

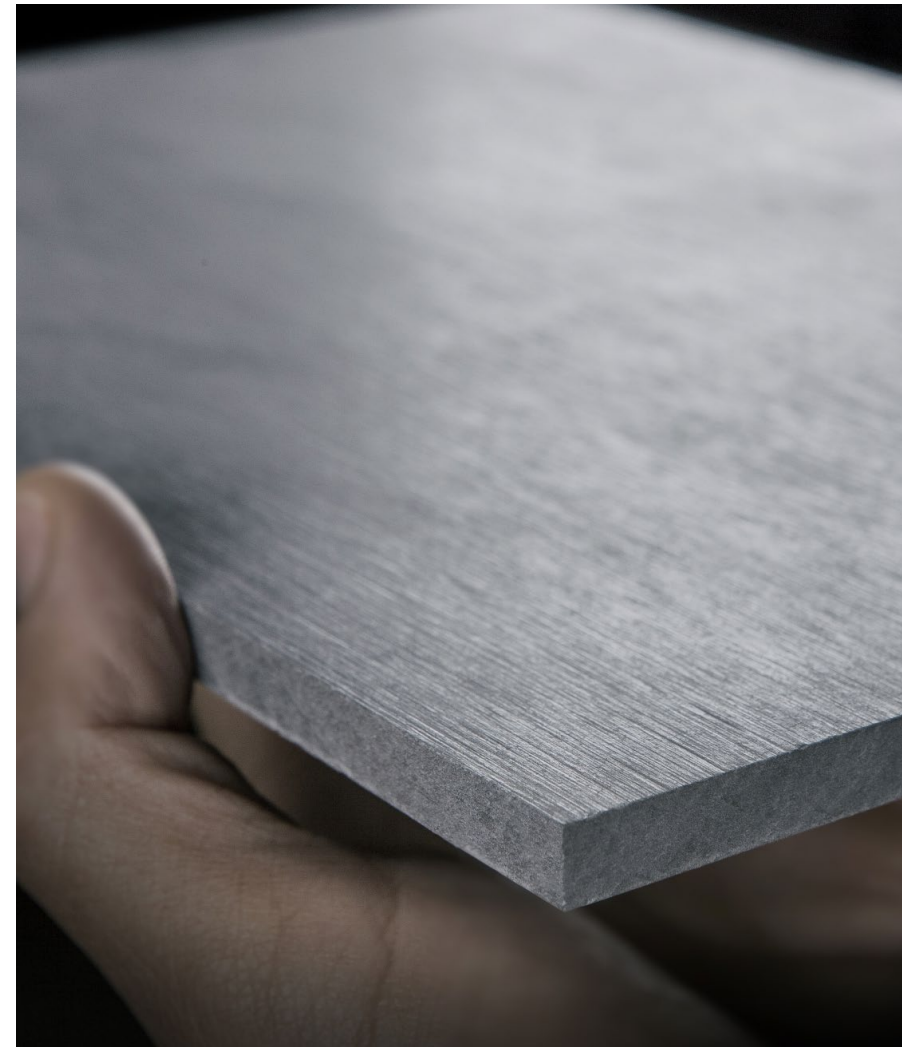
12:00 Midday





# EQUITONE [tectiva]

EQUITONE [tectiva] is a through-coloured facade material, characterised by a sanded surface and naturally occurring hues within the material. Every tectiva panel is unique, strongly expressing the raw texture of the core fibre cement material. The material comes in a large panel size and can be transformed into any size or shape in the workshop or on site. No matter what design options you explore, EQUITONE's through-coloured nature guarantees crisp, monolithic details.





TE90



TE00



TE10



TE60



TE15



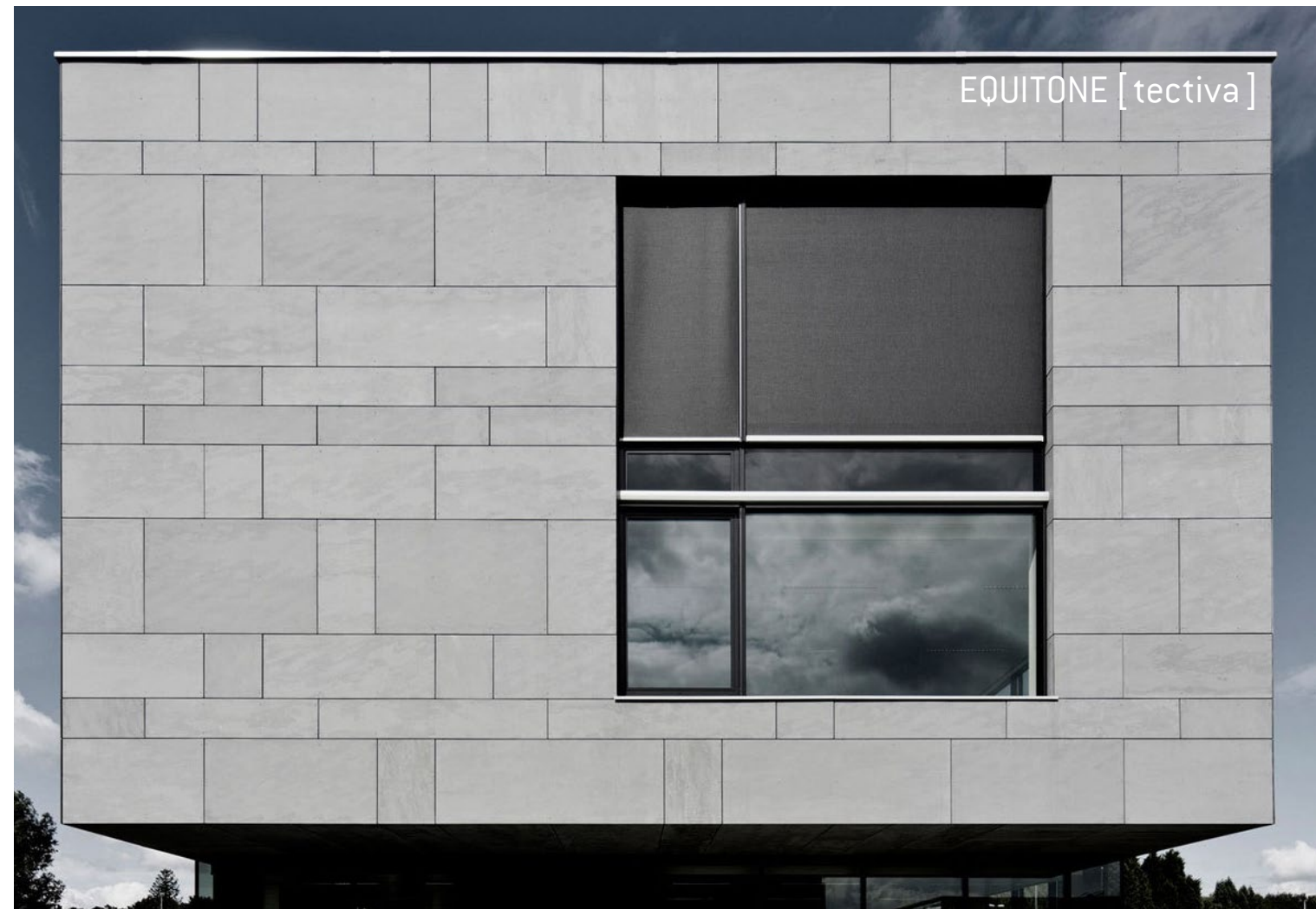
TE20



TE30



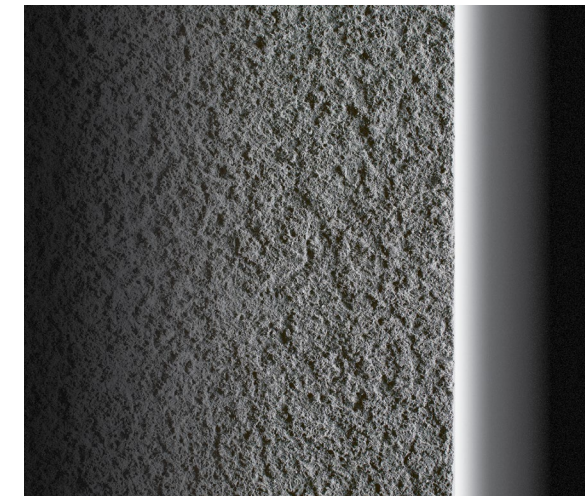
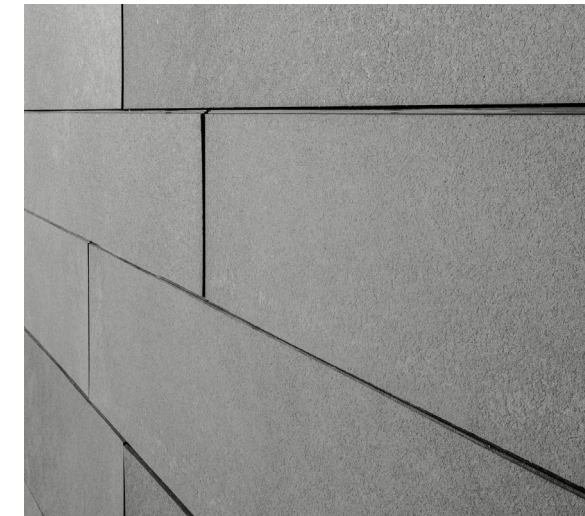
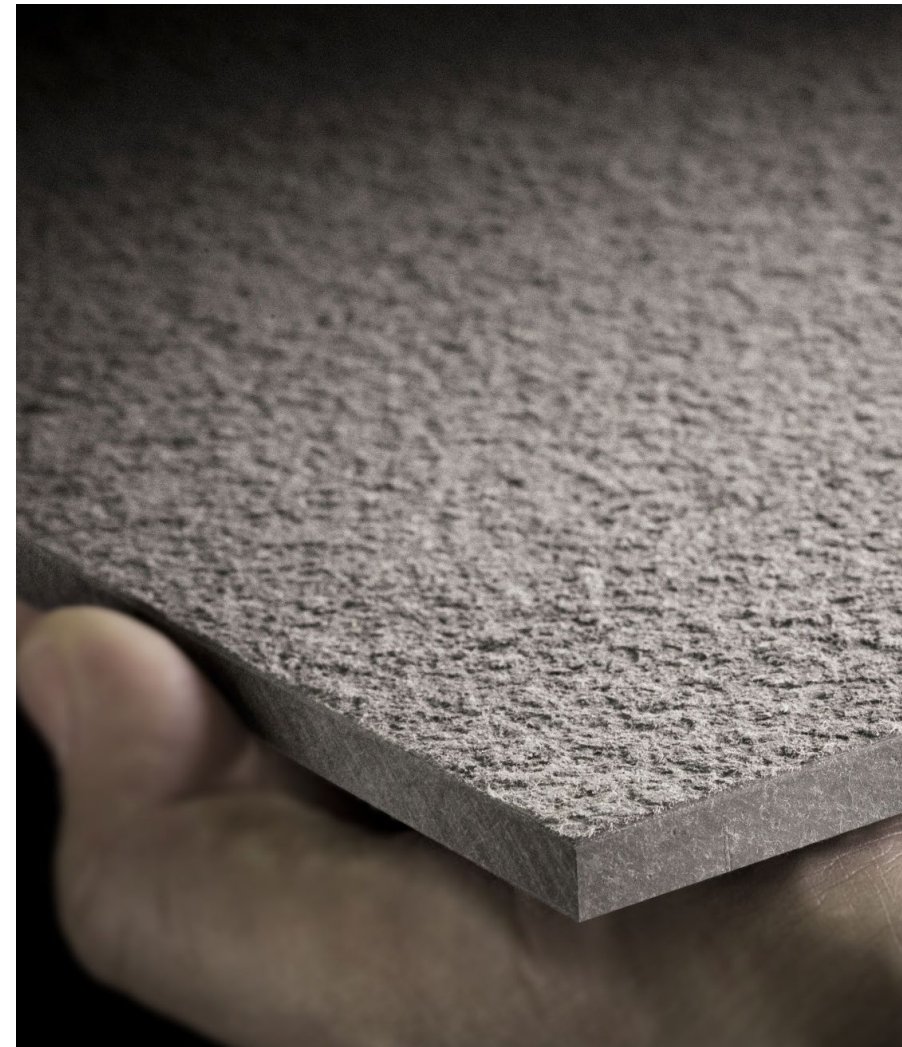
TE40



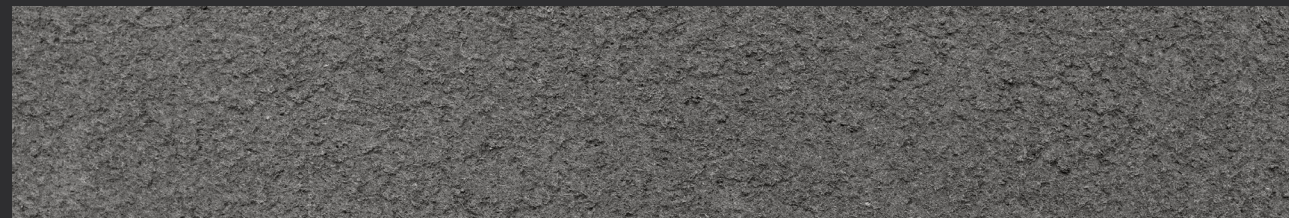


# EQUITONE [materia]

EQUITONE [materia] is a through coloured facade material that accentuates the beauty of fibre cement. The material encompasses the characteristics of cement, whereas the fibres render its surface textured yet velvety. The ever-changing atmosphere, gives the material natural subtle shade variations. The material comes in a large panel size and can be transformed into any size or shape in the workshop or on site.







MA400



MA400



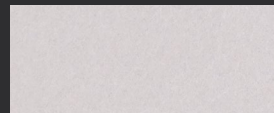
# EQUITONE [natura]

EQUITONE [natura] is a through-coloured facade material. Every EQUITONE [natura] panel is unique, subtly displaying the raw texture of the core fibre cement material. The material comes in a large panel size and can be transformed into any size or shape in the workshop or on site. No matter what design options you explore, EQUITONE's through-coloured nature guarantees crisp, monolithic details.

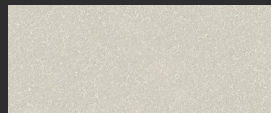




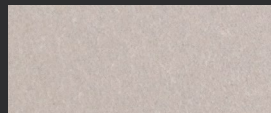
## THROUGH-COLOURED



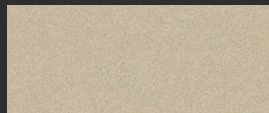
N162



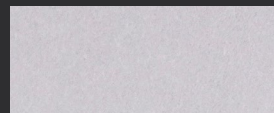
N154



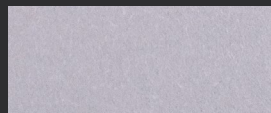
N861



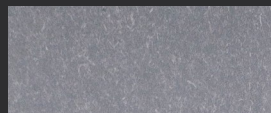
N961



N161



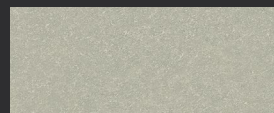
N163



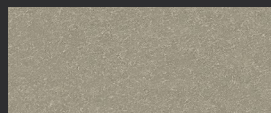
N211



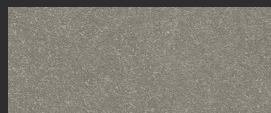
N252



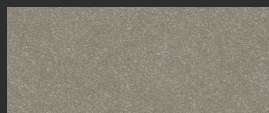
N891



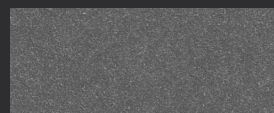
N892



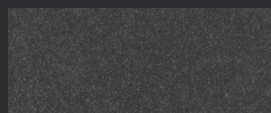
N250



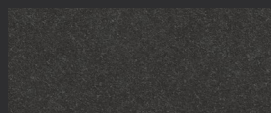
N294



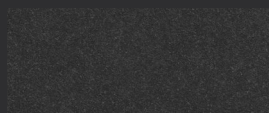
N281



N251

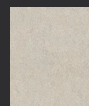


N073

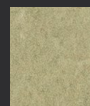


N074

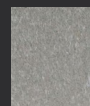
## SPECIAL COLOURS



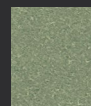
N661



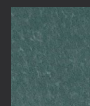
N662



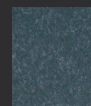
N593



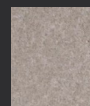
N594



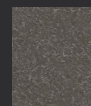
N411



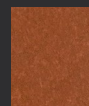
N412



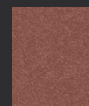
N991



N972



N331



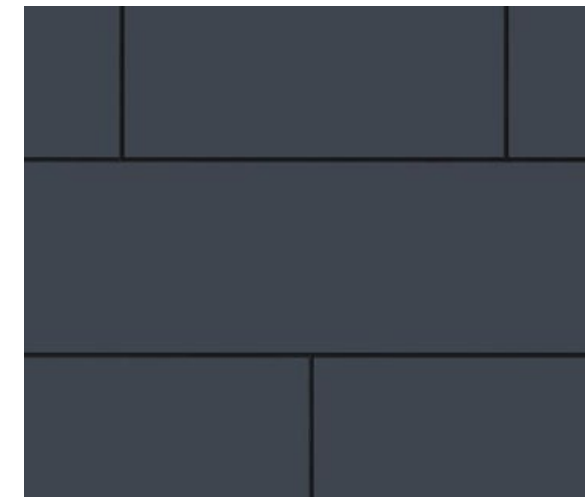
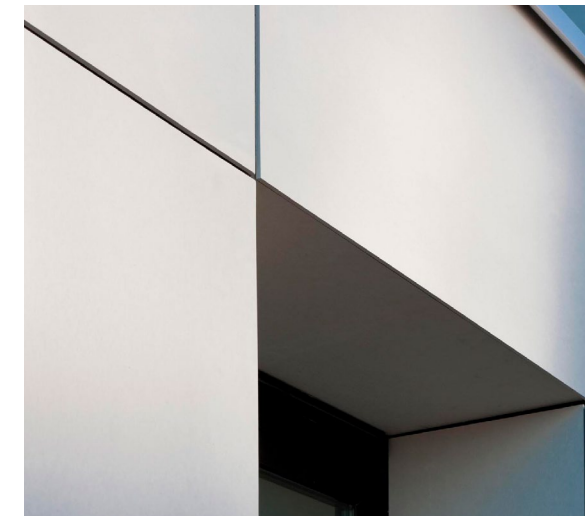
N359

Other colours available on request, subject to minimum order quantities.

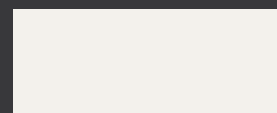


# EQUITONE [pictura]

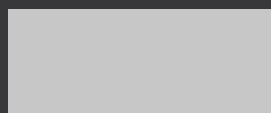
EQUITONE [pictura] is a fibre cement facade material with an ultra matt architectural finish. Thousands of custom-matched matt project colours are available on request. The material comes in a large panel size and can be transformed into any size or shape in the workshop or on site. The material can also be perforated or printed. No matter what design options you explore, EQUITONE material is ideal for crisp detailing.







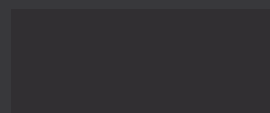
PW 141



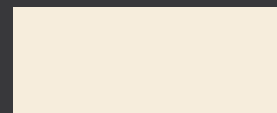
PG 243



PG 241



PA 041



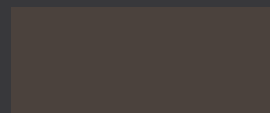
PW 841



PG 843



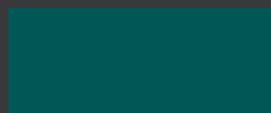
PG 844



PA 944



PG 542



PG 546



PG 444



PG 342



PG 642



PG 545



PG 443



PG 341



PG 641



PG 544



PG 442



PG 742

Other colours available on request, subject to minimum order quantities.

EQUITONE [pictura]

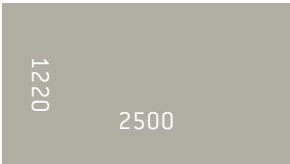




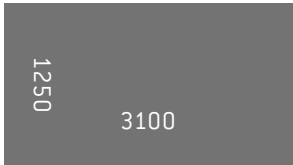
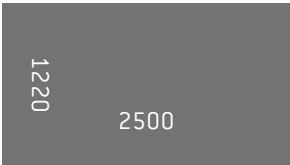
# 2.0 Material

Maximum usable sizes in mm.

EQUITONE [tectiva] 8 mm thick  
EQUITONE [linea] 10 mm thick

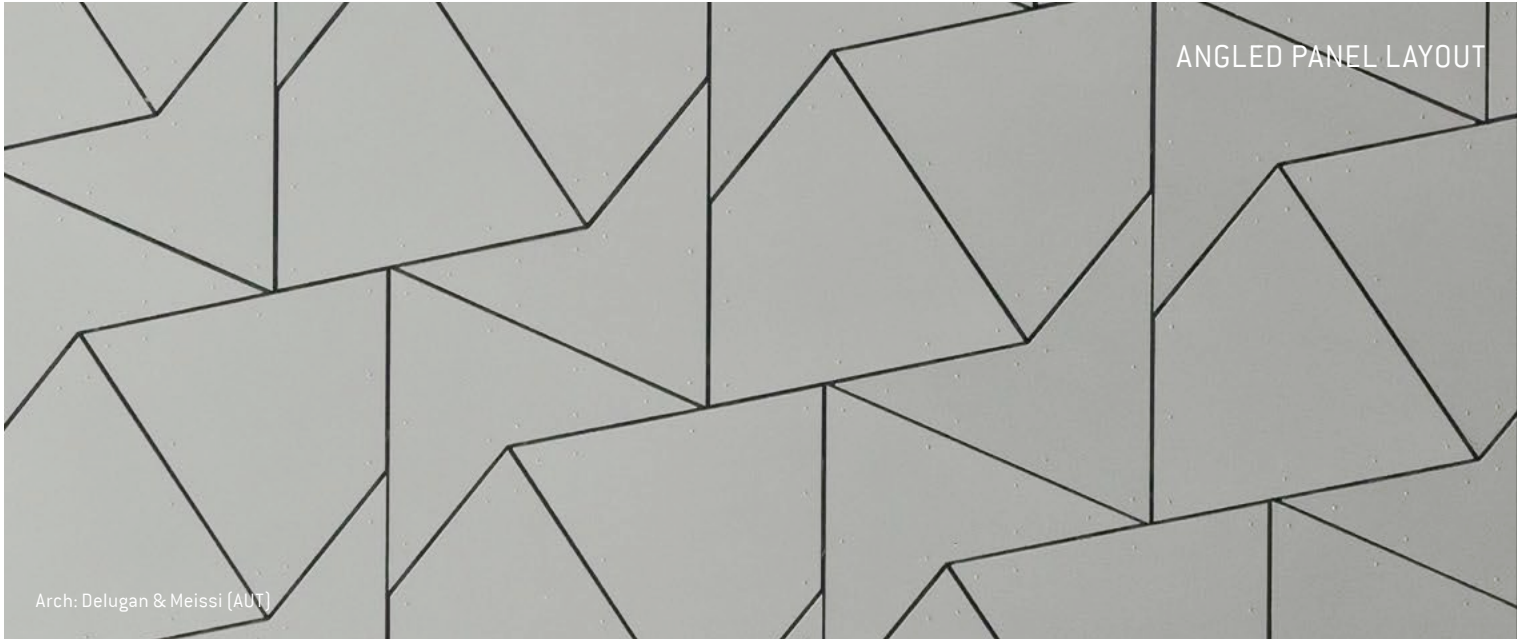
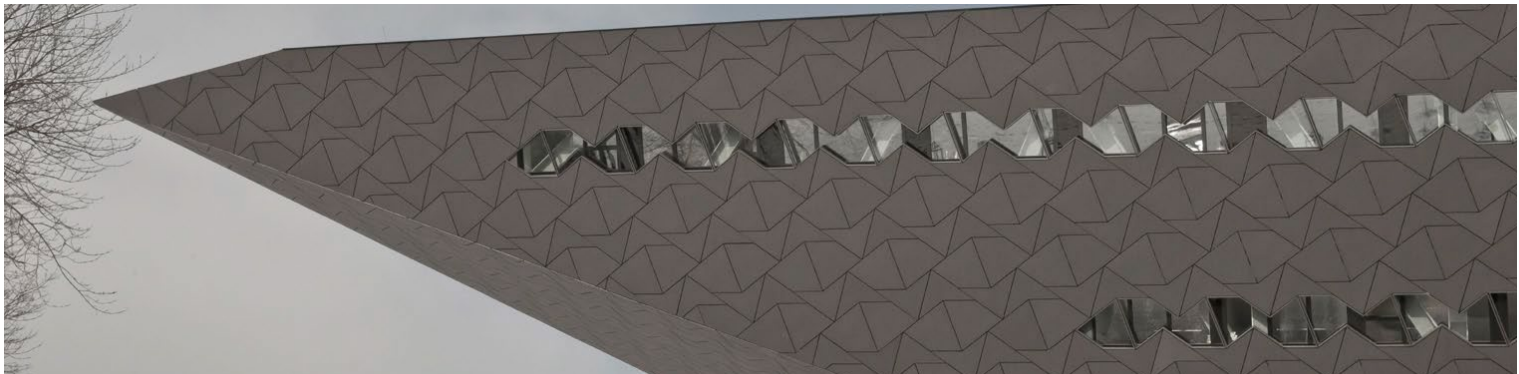


EQUITONE [natura] 8 and 12 mm thick  
EQUITONE [natura] PRO 8 and 12 mm thick  
EQUITONE [materia] 8 and 12 mm thick  
EQUITONE [pictura] 8 and 12 mm thick  
EQUITONE [textura] 8 and 12 mm thick



**Reaction to fire**

Reaction-to-fire focuses on the behaviour of the materials during the development of a fire.  
All EQUITONE materials are classified as A2s1-d0 to EN 13501-1





## 3.0 Panel layout

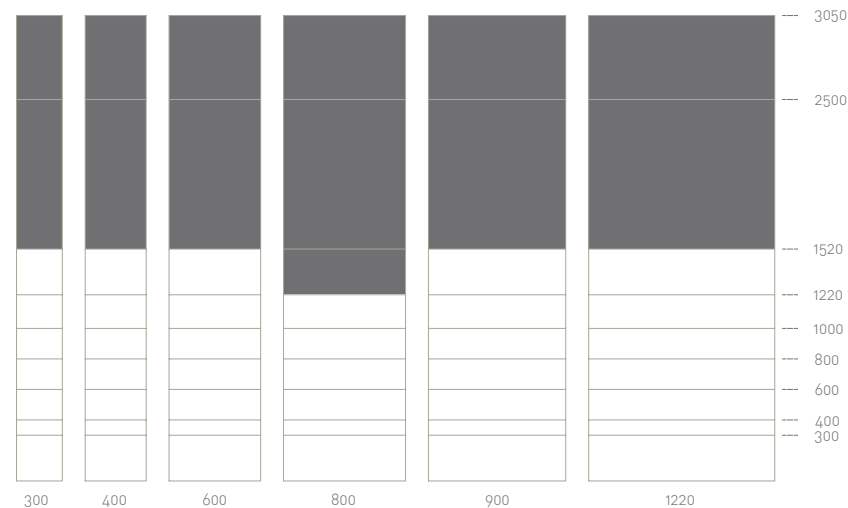
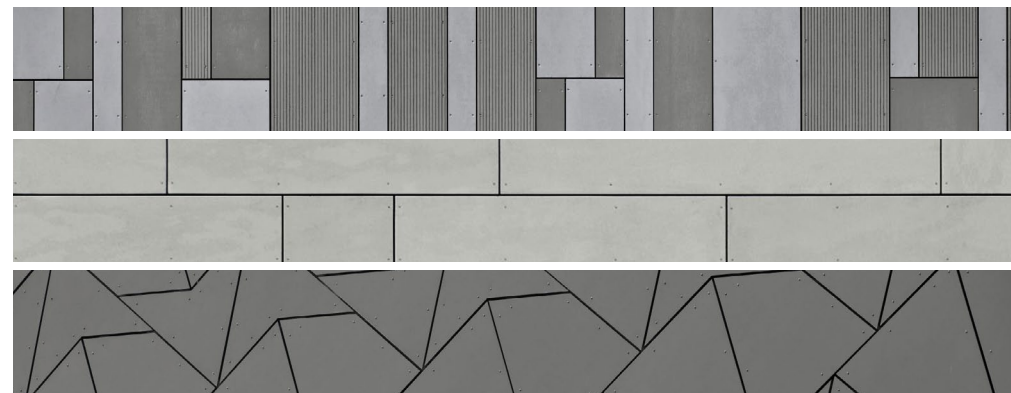
EQUITONE panels can be cut and arranged in many forms, limited only by imagination. Whether a vertical, horizontal or angled layout is desired with large, small, narrow panels, laid either random or staggered are all possible. The pattern of the panels will have a bearing on the supporting frame.

### Economic module sizes

High performance fibre cement panels can be made to any module and offer the architect and designer wide design freedom. When designing, the following information is aimed at providing the specifier with guidance on the most economic material usage from standard sheets. Sizes greater than half the maximum manufacturing lengths become progressively less economical in ratio to the distance downwards from full length to half length as indicated on the charts.

The shaded areas indicate the most uneconomic modules cut from a standard sheet size (based on 1220mm x 3050mm sheet)

EQUITONE can provide support to optimization calculations.



## 4.0 Joints

It is a feature of a ventilated facade that the joints do not need to be sealed because any water penetration is managed by a combination of the cavity and the air tightness of the backing wall. Normally four types of joints are used between the panels.

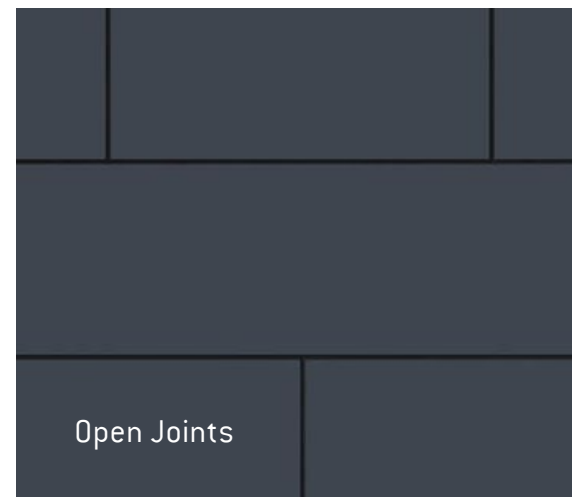
1. Open joints in which there is a clear open gap between the edges of adjoining panels.
2. Overlap joint in which the bottom of one panel overlaps the top of the lower panel. Shiplap is an example of this. This is only suitable for narrow panels.
3. Covered joints where an expressive feature is used over the joints to highlight the pattern.
4. Baffled joints where a joint profile is positioned behind the panels to block the direct line through the opening, while not sealing it.

Consider colour choice of support frame, insulation and backing wall as these may be seen.

### Joint Size

Many years of practice have shown that the optimum width of the joints between large panels is 10mm. A 10mm joint is the best, aesthetically. 10mm also offers the installer a good level of tolerance when installing the panel.

Minimum joint - 8mm. Maximum joint - 12mm



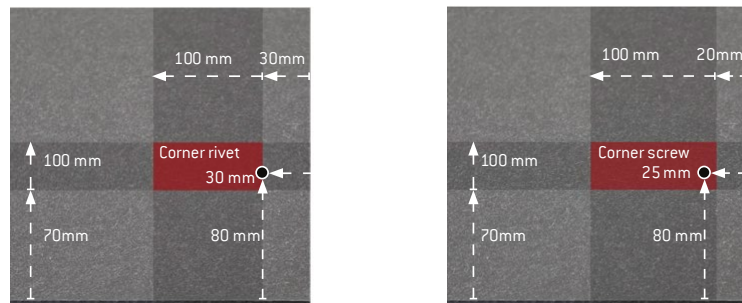


## 5.0 Fixings

### 1. Face Fixings

EQUITONE panels can be face fixed using EQUITONE UNI-rivet for metal support frames or the EQUITONE UNI-screw when a timber support frame is used. All fixings are available with colour match heads to blend in with the panel. The rivets and screws are both low profile heads. The fixing systems are designed to accommodate the expansion and contraction of the support frame without putting excessive stresses on the panel. The fixings are positioned at centres to suit the wind load the façade will be subjected to. Normally centres are up to 625mm and will reduce as determined by the wind calculations.

The corner position of the fixings should be located within the red box.



Refer to Uni rivet and screw fixing guides for full information.

## 5.0 Fixings

### 2. Hidden Fixings

For hidden fixings a mechanical system is possible. Please note that this is a precision fixing system and a good knowledge of fabrication and installation is critical to ensure a successful facade.

#### Mechanical Secret Fix

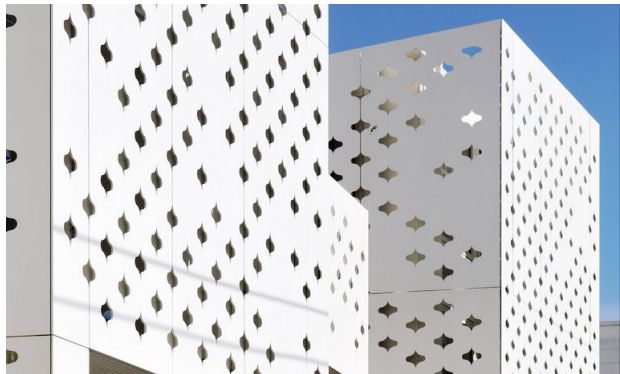
The mechanical hanging system utilises an undercut anchor which is secured in the rear of the panel in specially drilled holes. To this a hanger bracket is fixed. This hanger then interlocks with a horizontal rail.

\* Refer to the individual mechanical hanging systems installation literature for details. This system is suitable for EQUITONE [tectiva], EQUITONE [linea], and 12mm EQUITONE [natura], EQUITONE [natura PRO], EQUITONE [pictura], EQUITONE [textura] and EQUITONE [materia].

### Glue Fixings

It is important that Glue Fixing is carried out in strict accordance with the glue suppliers' instructions by certified installers. Please note that recommendations and fixing procedures differ between suppliers. Not all glue systems are suitable for all panels on all support frame options. Therefore, it is important to choose the correct glue for the application. As there are many suppliers of glue, we would always advise that the installer only works with certified products, which have been tested with EQUITONE panels.









## 8.0 Special applications

### General

While EQUITONE panels are used as a facade cladding, they can also be used in other applications.

#### 1. Perforations

Perforations may take the form of round holes, slots, square, rectangular holes or random shaped holes.

#### 2. Extreme cuttings

#### 3. Milled surfaces

#### 4. Roof applications

EQUITONE [textura] and [pictura] can be considered for applications on a roof. Please bear in mind that the panel is only decorative and there must be a suitably designed water-proof construction under the panels. Please contact your local EQUITONE Service team for more assistance.



## 8.0 Special applications

### 5. Brise soleil and shutters

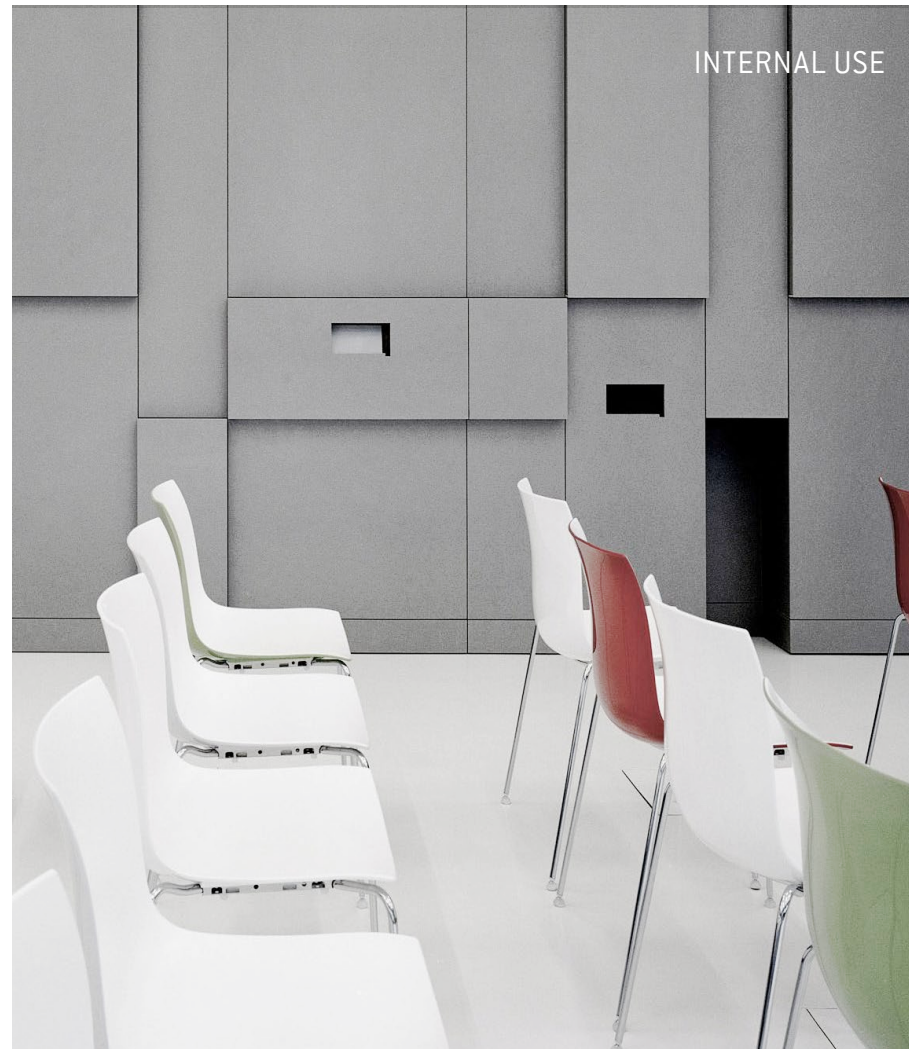
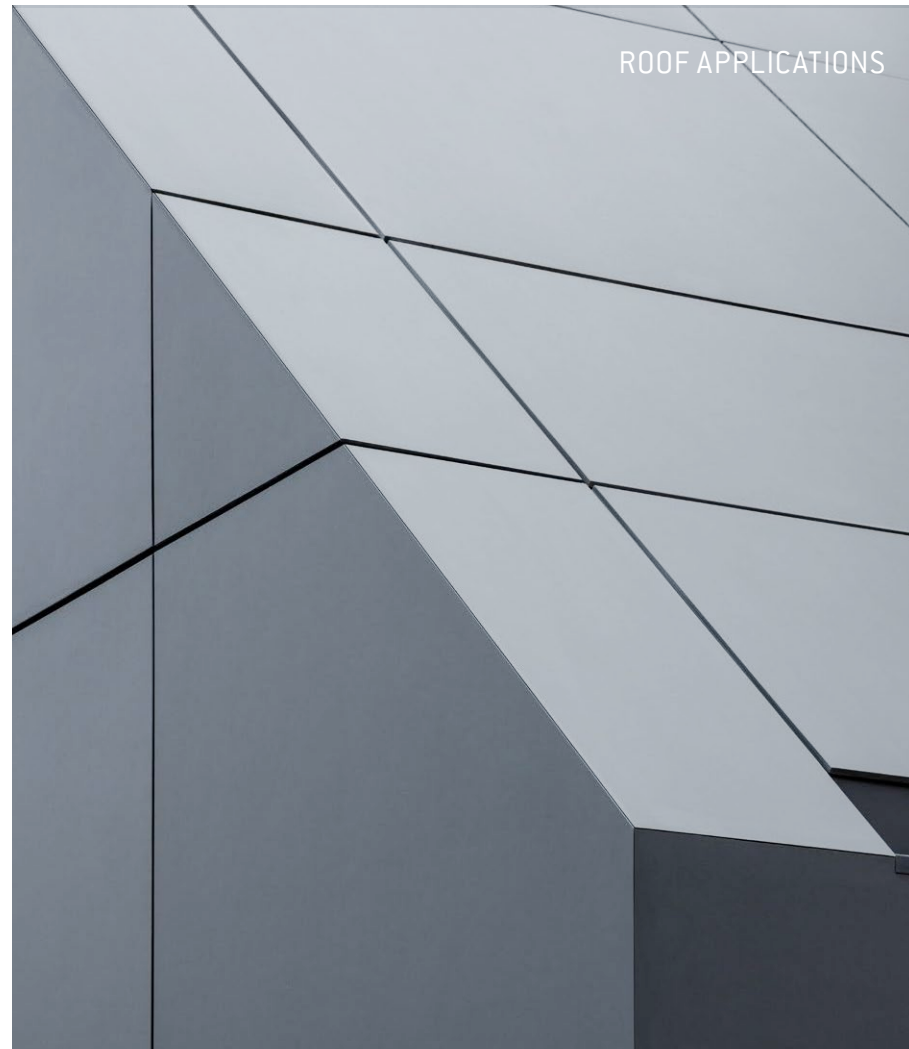
EQUITONE can be used as a Brise Soleil, shutter or architectural feature of a building. To be installed both horizontally and vertically. The Brise Soliel or shutter gives the feature of a continuous façade and can also be perforated if required to give a unique visual aspect to the façade. Not all materials are suitable for this application, please contact your local technical support for additional information.

### 6. Curtain Walling

The post-and-beam or stick system is normally assembled on site. The vertical members are fixed to the floor slab and then connected with horizontal transoms. Into this frame will fit the glazing or panels.

### 7. Internal Use

The use of EQUITONE panels internally is possible, please contact your EQUITONE service team for more assistance.







Arch: Arkitekterne Bjørk & Mølgård ApS, Aalborg, Denmark

A: Distributed by Marley Building Systems  
2 Setchell Road | Roodekop | 1401

W: [www.equitone.com/en-za/](http://www.equitone.com/en-za/)  
[www.marleybuildingsystems.co.za](http://www.marleybuildingsystems.co.za)

T: 011 389 4500  
E: [contactus.mbs@etexgroup.com](mailto:contactus.mbs@etexgroup.com)



Approved installer of Equitone | South Africa

