

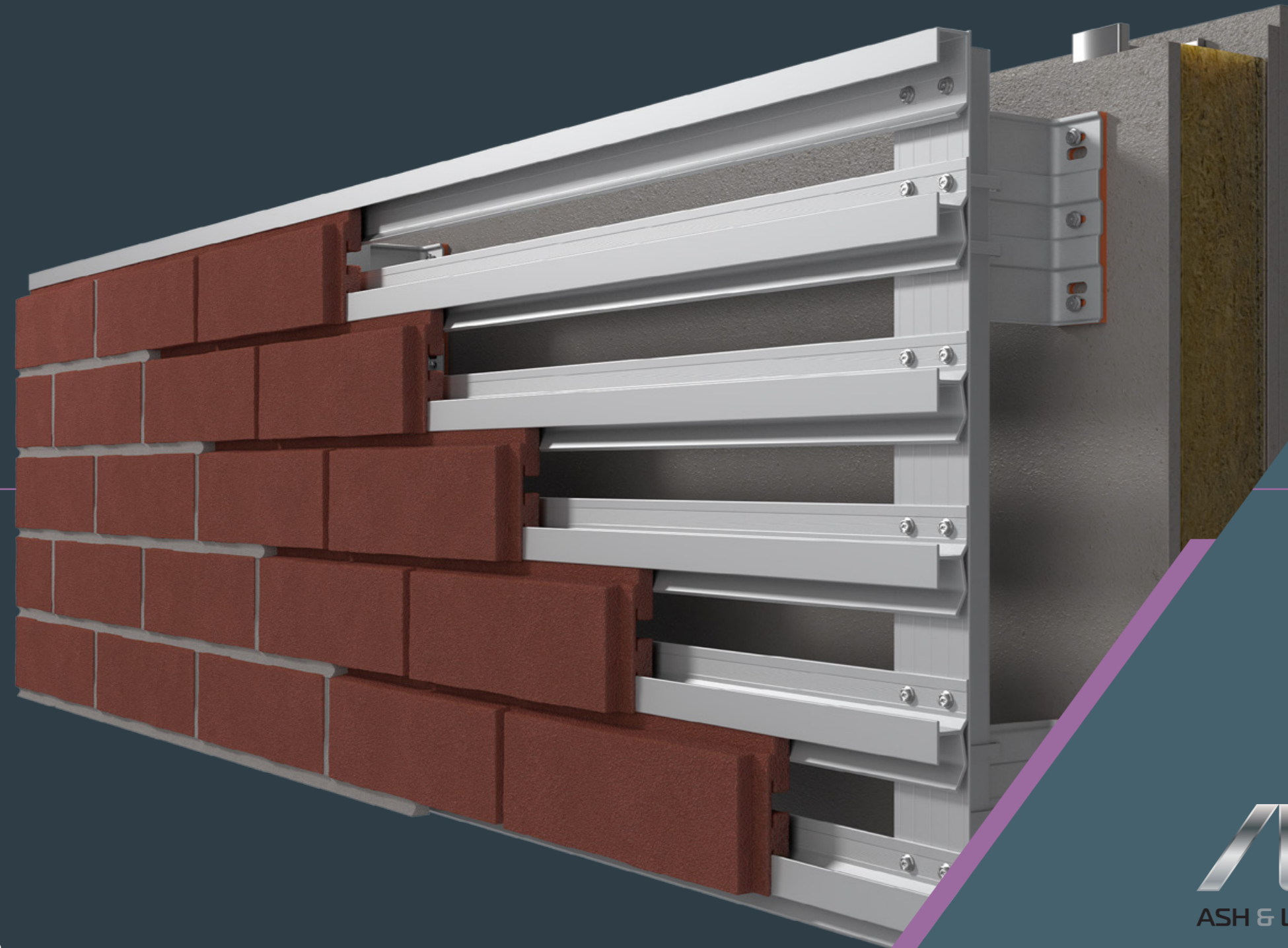
NATURAL-X

BRICK CLADDING SYSTEM



APPROVED INSTALLER

SYSTEM GUIDE



NATURAL-X

NATURAL-X

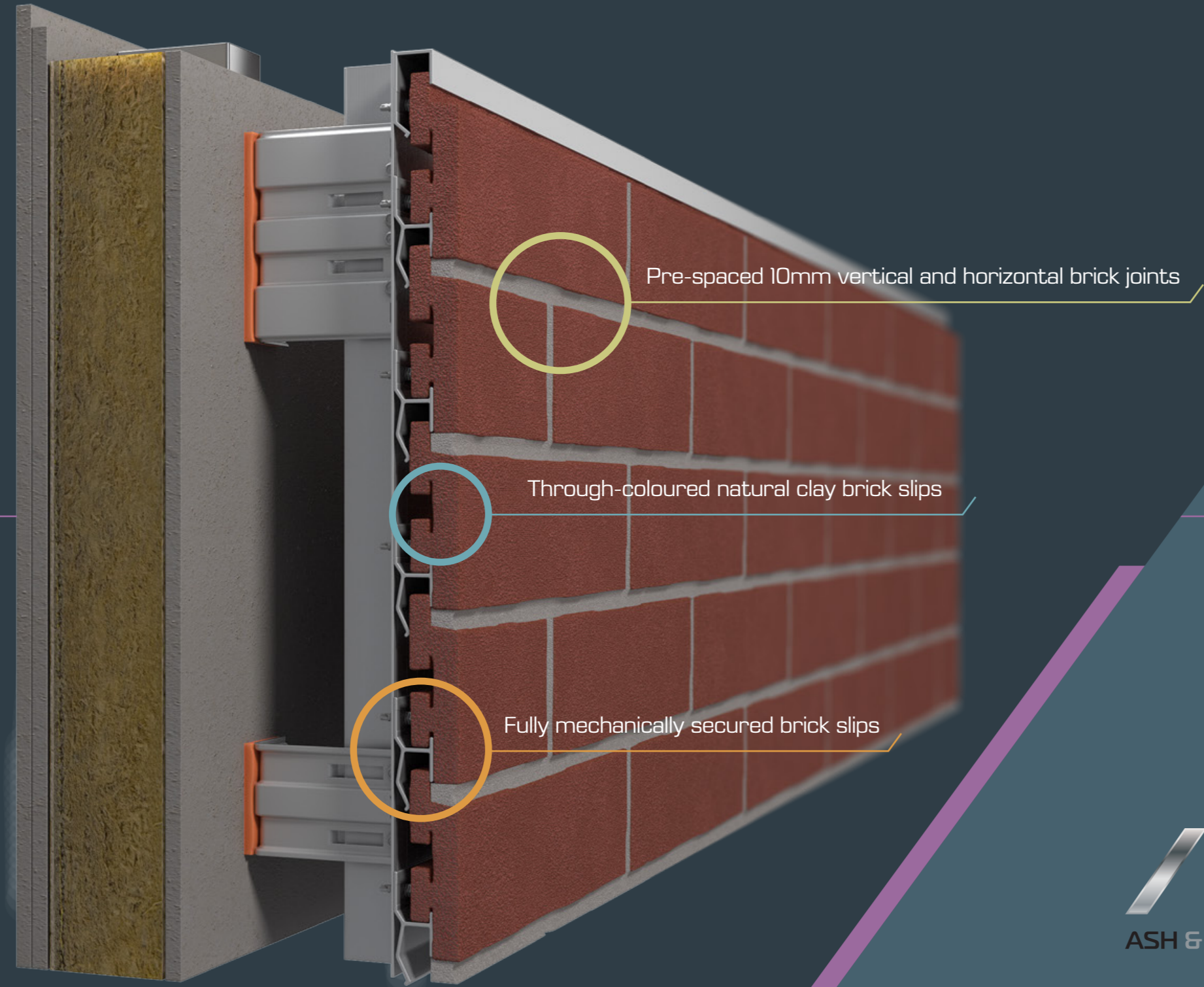
RESPONDING TO CHANGING NEEDS AND EVOLVING CONSTRUCTION METHODOLOGIES, NATURAL-X IS THE LATEST INNOVATION FROM ASH & LACY.

WELCOME TO
NATURAL-X

SYSTEM DESCRIPTION

A lightweight, mechanically fixed cladding system delivering all the benefits of natural clay brick, NaturAL-X also provides substantial cost savings compared to similar systems. Featuring unique clay brick slips and 6063T6 grade aluminium support rails, the system is available in a wide range of colours and textures. Whilst delivering advantages associated with rainscreen cladding, including reduced installation times and associated costs, it realises a truly desirable finish.

4-5	Key Features
6-7	Key Benefits
8-9	Components
10-11	Installation
12-15	Finishes
16-22	Technical
23	Contact



NATUR/L-X

NATURAL-X

Delivering the aesthetic appeal of organic clay brick, NaturAL-X combines this with the financial savings, reduction in structural load and rapid installation capabilities associated with a lightweight mechanically fixed system. It also exceeds the rigorous testing standards developed by the Centre for Window and Cladding Technology (CWCT).

MORE THAN JUST
A PERFECT FINISH

NaturAL-X eliminates the weather dependency of traditional methodologies too, whilst still providing a wide range of brick colours and textures.

KEY FEATURES

Fully mechanically secured brick slips

Pre-spaced mortar joints

Solid natural clay brick

Tough and lightweight 6063T6 grade aluminium

Compatible with a range of construction methodologies

DURABLE

Delivers the colour-fast stability and natural weathering behaviour of a traditional clay brick finish.

PREDICTABLE

Makes programming easier by eliminating the uncertainties associated with weather dependent processes.

FASTER

Easy to install, minimising time on site and the associated labour costs.

SIMPLER

Ideal for installation using aerial work platforms, minimising the need for scaffolding.



NATUR/L-X

NATURAL-X

Ash & Lacy has a reputation for innovation, realising products that leverage technology, creating opportunity and delivering competitive advantage. NaturAL-X represents substantial progress in the development of mechanically fixed cladding systems, providing benefits that expand the scope of design and construction for a diverse range of projects.

CREATING NEW OPPORTUNITIES

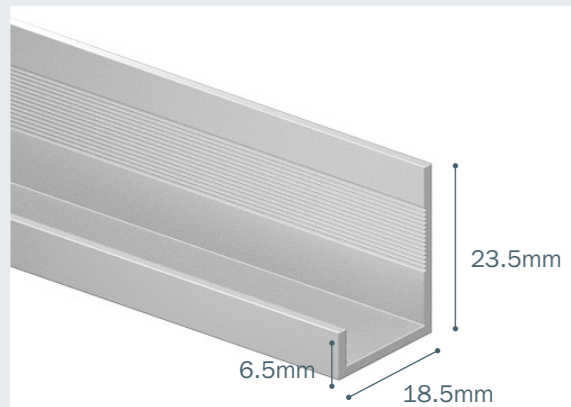
20% CHEAPER

Provides cost savings of up to twenty percent, compared with similar systems.

50% LIGHTER

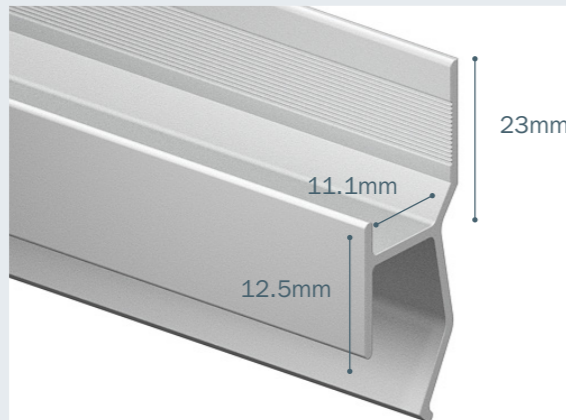
Over fifty percent lighter than traditional masonry, reducing structural load.

> STARTER RAIL



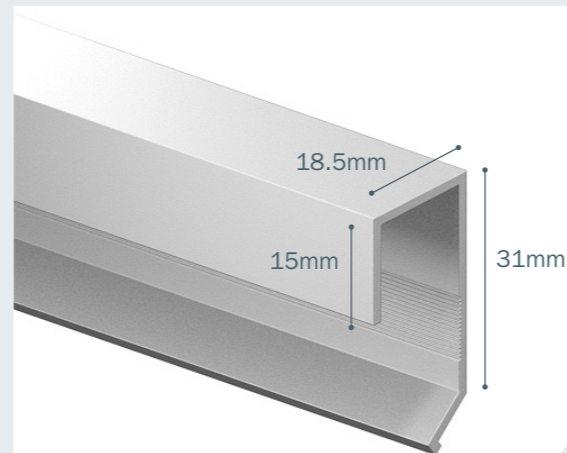
Available in 3m lengths.

> MIDDLE RAIL



Available in 3m lengths.

> TOP RAIL



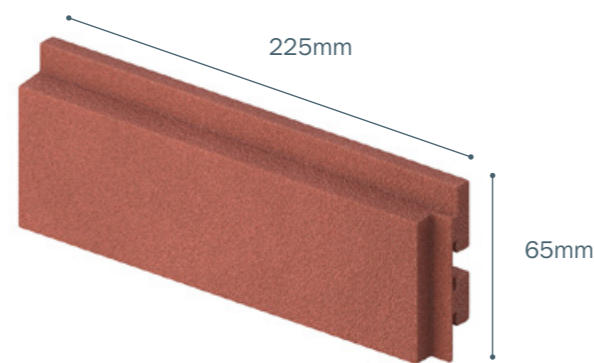
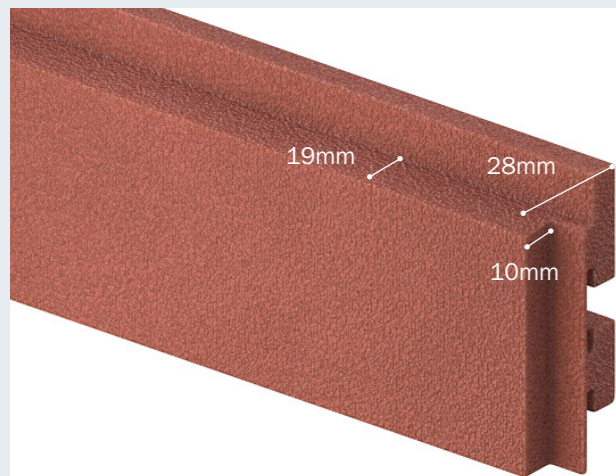
Available in 2m lengths.

NATURAL-X

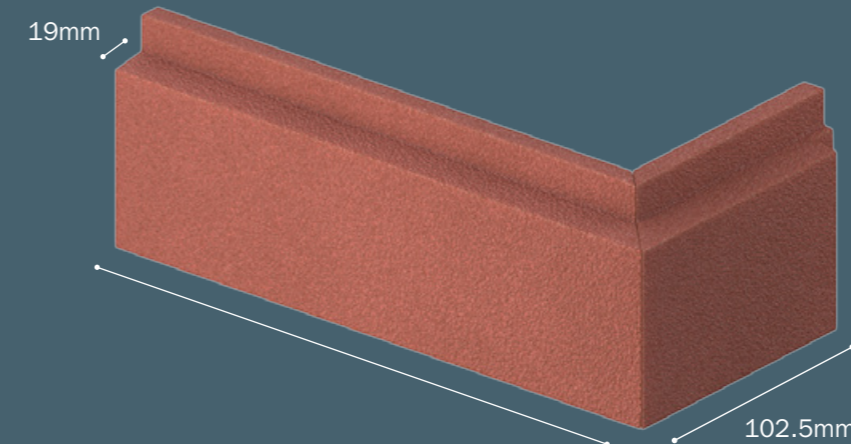
All the benefits of NaturAL-X are delivered through five dedicated components, a starter, middle and top rail, all extruded from tough, lightweight 6063T6 grade aluminium, plus natural clay facing and corner brick tiles. Together, these can be fixed seamlessly to Ash & Lacy's innovative range of AxiAL rainscreen support systems, making the entire design and installation process simple, from concept to completion.

NATURAL-X

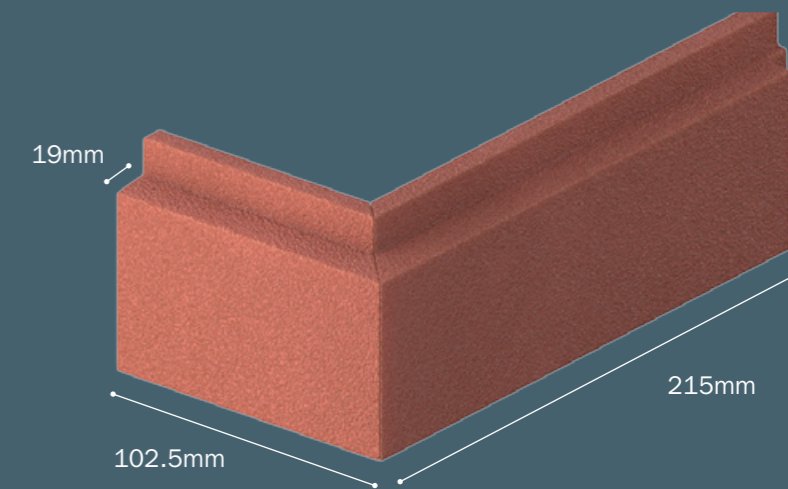
COMPONENTS



> BRICK



> BRICK CORNER - right hand



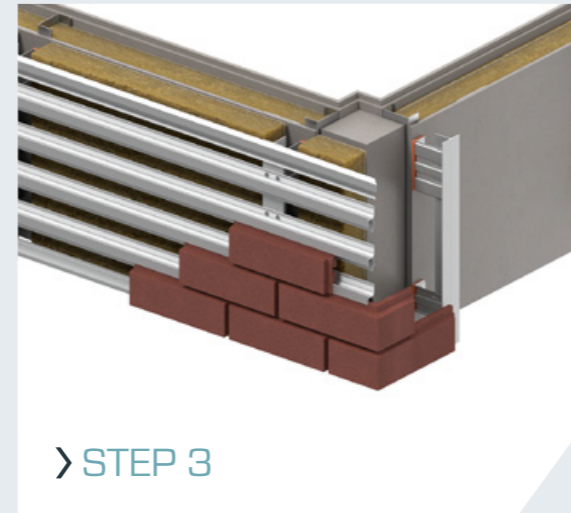
> BRICK CORNER - left hand



> STEP 1



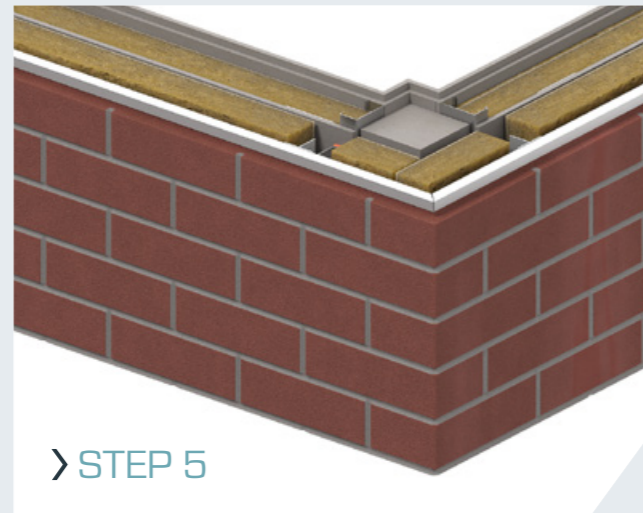
> STEP 2



> STEP 3



> STEP 4



> STEP 5



NATUR/L-X

NATUR/L-X

Working with NaturAL-X delivers advantages from day one, starting with its lightweight construction decreasing the demand on foundations and reducing associated construction costs. The system is fully compatible with an extensive range of building substrates too, making it ideal for enhancing concrete, steel frame, masonry and insulated panels. Installation is also fast and simple, providing time and cost saving advantages over traditional brickwork, whilst realising its undeniable aesthetic appeal.

INSTALLATION

STEP 1. Mechanically fix NaturAL-X vertical support rails to the building substructure at 600mm maximum centres.

STEP 2. Horizontally affix middle rails to the vertical supports at 75mm increments, including a starter and top rail in their respective locations.

STEP 3. Slip NaturAL-X brick tiles firmly into place, guided by the preformed upper and lower retainers.

STEP 4. NaturAL-X brick tiles have an integrated rebate, consistently setting the vertical perp joint at 10mm. The corresponding 10mm horizontal bed joint is instantly created by the profiled top lip of the adjacent brick tile.

STEP 5. So, when installation is complete, simply injection point these joints with Parex Historic mortar to realise a classic clay brick finish.

> RANGE A – REDS



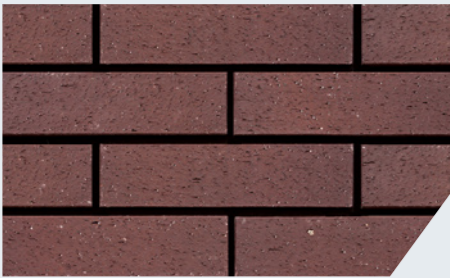
Colour: Red Multi Texture: Dragfaced Code: SD103



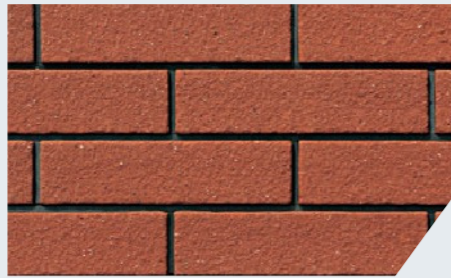
Colour: Red Multi Texture: Dragfaced Code: SD102



Colour: Red Texture: Dragfaced Code: D1023



Colour: Red Texture: Dragfaced Code: D1011



Colour: Red Texture: Sandfaced Code: F1011



Colour: Red Texture: Smooth Code: C102



Colour: Red Multi Texture: Smooth Code: SC102



Colour: Red Texture: Smooth Code: C1033

NATUR/L-X

NATURAL-X

With over thirty standard colours, complimented by a range of textures and finishes, NaturAL-X opens up a world of creative opportunities.

For full specifications on the range contact your local Ash & Lacy representative today.

RELEASING YOUR CREATIVITY

> RANGE D – BROWNS



Colour: Brown Texture: Smooth Code: C316



Colour: Brown Texture: Smooth Code: C3102



Colour: Brown Texture: Dragfaced Code: D3101



Colour: Brown Texture: Dragfaced Code: D3103



> RANGE B – BUFFS



Colour: Buff Multi Texture: Dragfaced Code: SD202



Colour: Buff Multi Texture: Dragfaced Code: SD203



Colour: Buff Texture: Dragfaced Code: D202



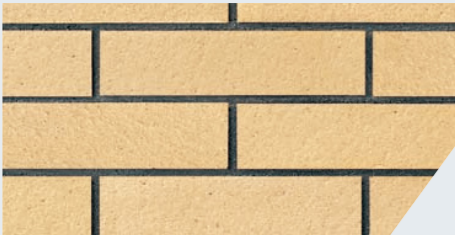
Colour: Buff Texture: Dragfaced Code: D204



Colour: Buff Multi Texture: Smooth Code: SC202



Colour: Buff Texture: Smooth Code: C202

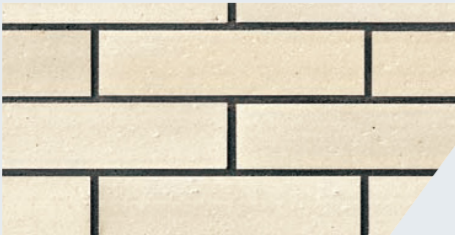


Colour: Buff Texture: Smooth Code: C204

> RANGE C – WHITE



Colour: White Texture: Smooth Code: C701



Colour: White Texture: Smooth Code: C702



Colour: White Texture: Dragfaced Code: D702



> RANGE E – GREYS & BLACK



Colour: Black/Grey Texture: Smooth Code: C802D



Colour: Black/Grey Texture: Smooth Code: C802C



Colour: Grey Texture: Sandfaced Code: F802B



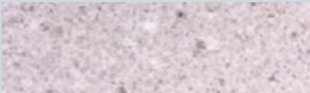
Colour: Black/Grey Texture: Dragfaced Code: D802A



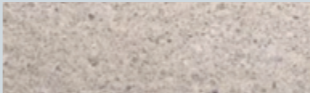
Colour: Black/Grey Texture: Dragfaced Code: D802C

FINISHES

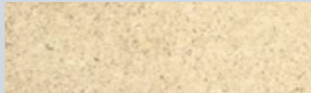
> STANDARD MORTAR COLOUR



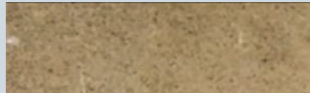
Colour: Natural Code: EA2070



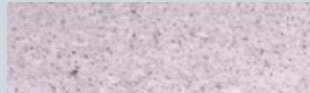
Colour: Portland Code: EA2071



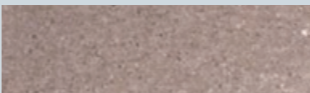
Colour: Bathstone Code: EA2072



Colour: Sandstone Code: EA2073



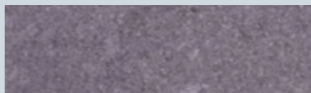
Colour: Light Grey Code: EA2074



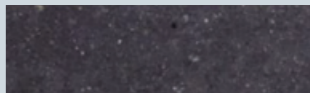
Colour: Mid Grey Code: EA2075



Colour: Stone Grey Code: EA2076



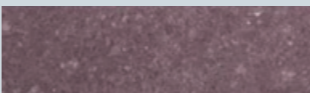
Colour: Dark Grey Code: EA2077



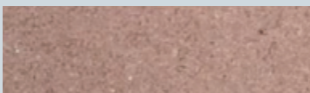
Colour: Charcoal Code: EA2078



Colour: Brick Red Code: EA2079



Colour: Dark Red Code: EA2080



Colour: Light Brown Code: EA2081



Colour: Mid Brown Code: EA2082



Colour: Dark Brown Code: EA2083

System Properties	RESULT
-------------------	--------

System weight	47kg/m²
Resistance to wind loading	2.4kN/m²

Brick Properties	TEST METHOD	RESULT
------------------	-------------	--------

Frost resistance	EN ISO 10545-12:1997	Fully resistant
Water absorption	EN ISO 10545-3:1995	6.40%
Breaking strength	EN ISO 10545-4:2014	345N
Thermal expansion	EN ISO 10545-8:2004	4.6 x 10-6°C
Reaction to fire	CWT	Class A1

Brick Criteria	RESULT
----------------	--------

Standard brick face dimensions	215mm x 65mm
Corner brick face dimensions	102 x 215 x 65mm
Brick thickness	28mm

Design Criteria	TEST METHOD
-----------------	-------------

Maximum vertical support centres	600mm
Maximum bracket centres	600mm
Brick rail length	3000mm
Top rail length	3000mm
Starter rail length	3000mm
Bracket adjustment range	40mm - 300mm
Movement joints	Maximum 6m
Building substrates	Masonry, Concrete, SFS



NATURAL-X

NATURAL-X

Ash & Lacy products are backed by a knowledgeable and experienced technical team. Available from 9:00am until 5:00pm Monday to Friday, they will be pleased to provide expert help and advice.

This extends to offering complete through-wall design advice and technical support, covering our lightweight steel framing, rainscreen cladding and interfacing with window design.

Detailed CAD and PDF files can also be supplied for specific requirements. Together, these services deliver comprehensive support for all the secondary elements of building façades.

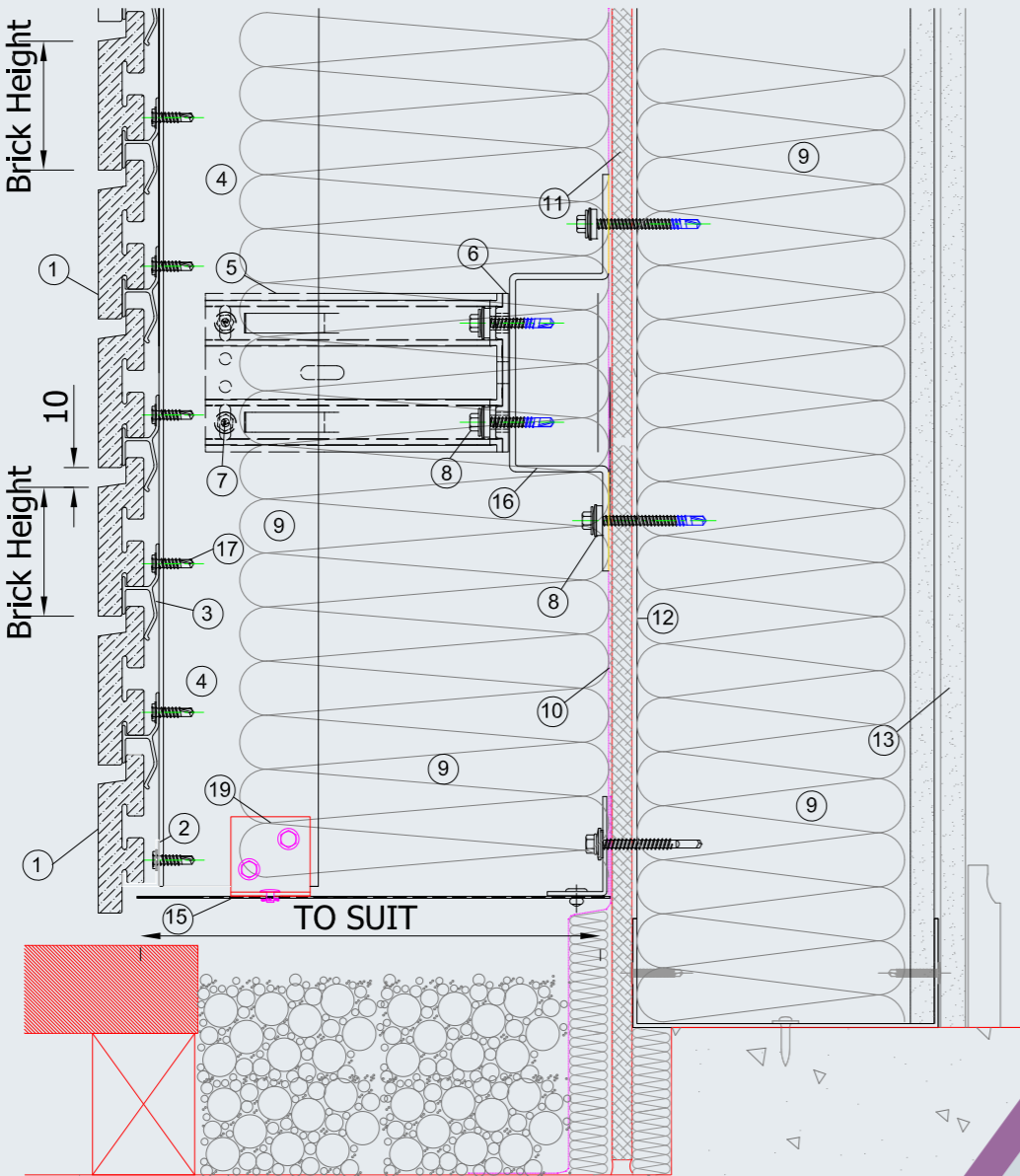
TECHNICAL



> NX BASE JUNCTION

- ① NaturAL Brick
- ② Starter Rail
- ③ Brick Rail
- ④ Mullion
- ⑤ Wall Bracket
- ⑥ Thermal Pad
- ⑦ Bracket/Mullion Fix
- ⑧ Bracket/Wall Fix
- ⑨ Insulation
- ⑩ Membrane
- ⑪ Cementitious Board
- ⑫ A&L Steel Frame
- ⑬ Internal Finishes
- ⑭ Top Rail
- ⑮ Ventilated Section
- ⑯ Horizontal Rail
- ⑰ Rail/Mullion Fix
- ⑱ Reinforcement Angle
- ⑲ Cleat
- ⑳ Flashing

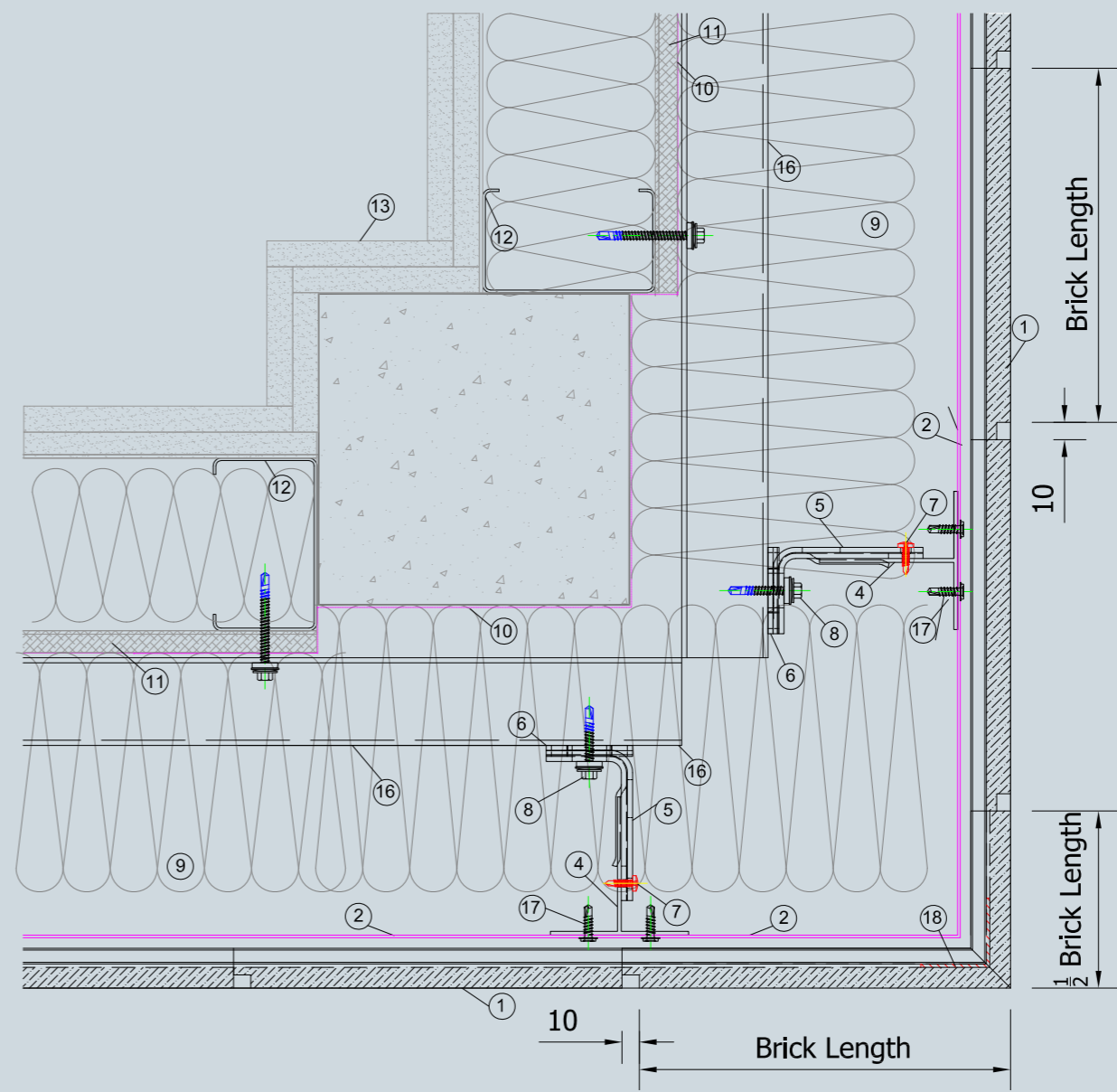
Note: All fixings, insulation and membranes indicated are for guidance only and need to be checked for each individual project.



> NX EXTERNAL CORNER

- ① NaturAL Brick
- ② Starter Rail
- ③ Brick Rail
- ④ Mullion
- ⑤ Wall Bracket
- ⑥ Thermal Pad
- ⑦ Bracket/Mullion Fix
- ⑧ Bracket/Wall Fix
- ⑨ Insulation
- ⑩ Membrane
- ⑪ Cementitious Board
- ⑫ A&L Steel Frame
- ⑬ Internal Finishes
- ⑭ Top Rail
- ⑮ Ventilated Section
- ⑯ Horizontal Rail
- ⑰ Rail/Mullion Fix
- ⑱ Reinforcement Angle
- ⑲ Cleat
- ⑳ Flashing

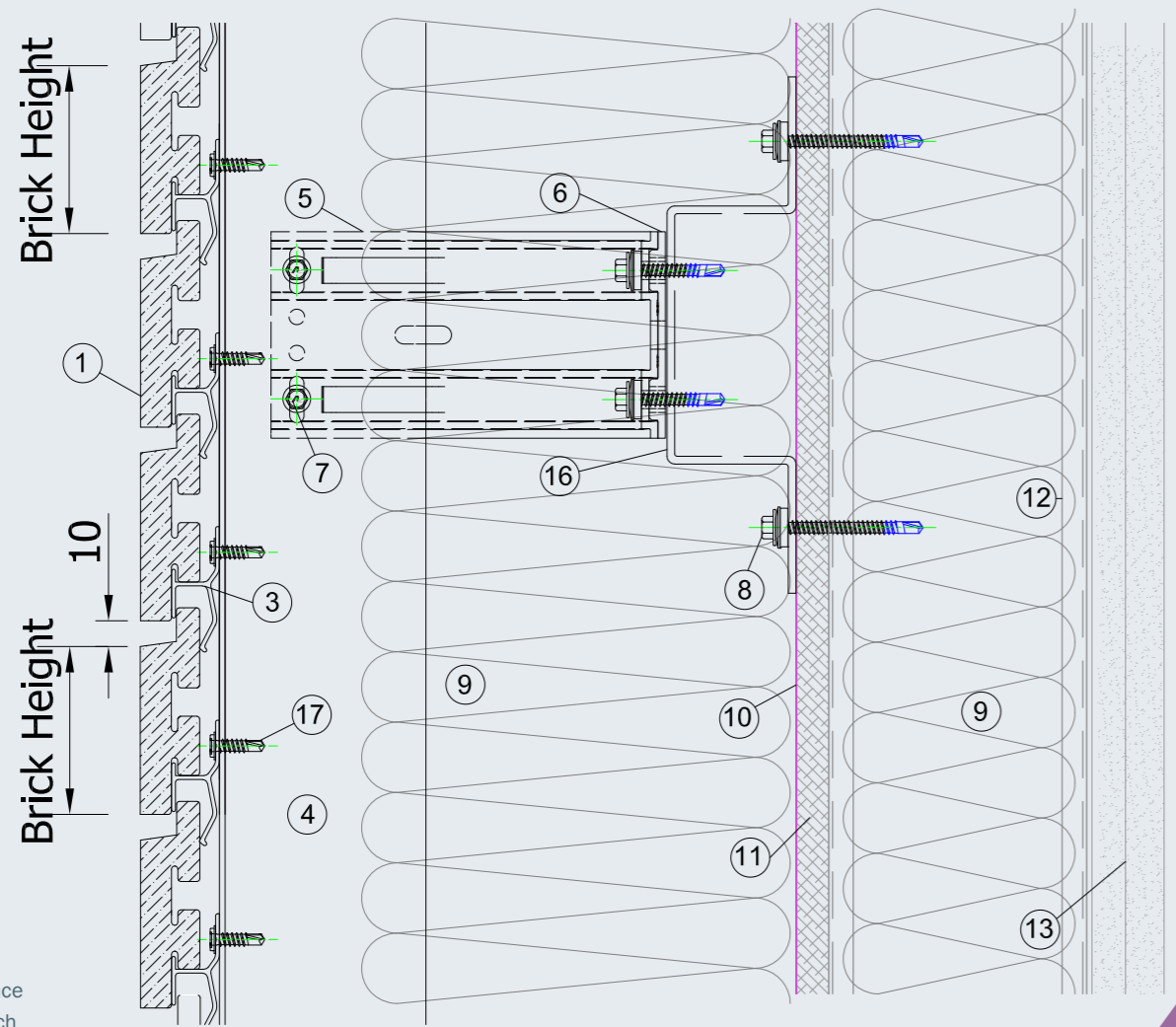
Note: All fixings, insulation and membranes indicated are for guidance only and need to be checked for each individual project.



> NX HORIZONTAL JOINT

- ① NaturAL Brick
- ② Starter Rail
- ③ Brick Rail
- ④ Mullion
- ⑤ Wall Bracket
- ⑥ Thermal Pad
- ⑦ Bracket/Mullion Fix
- ⑧ Bracket/Wall Fix
- ⑨ Insulation
- ⑩ Membrane
- ⑪ Cementitious Board
- ⑫ A&L Steel Frame
- ⑬ Internal Finishes
- ⑭ Top Rail
- ⑮ Ventilated Section
- ⑯ Horizontal Rail
- ⑰ Rail/Mullion Fix
- ⑱ Reinforcement Angle
- ⑲ Cleat
- ⑳ Flashing

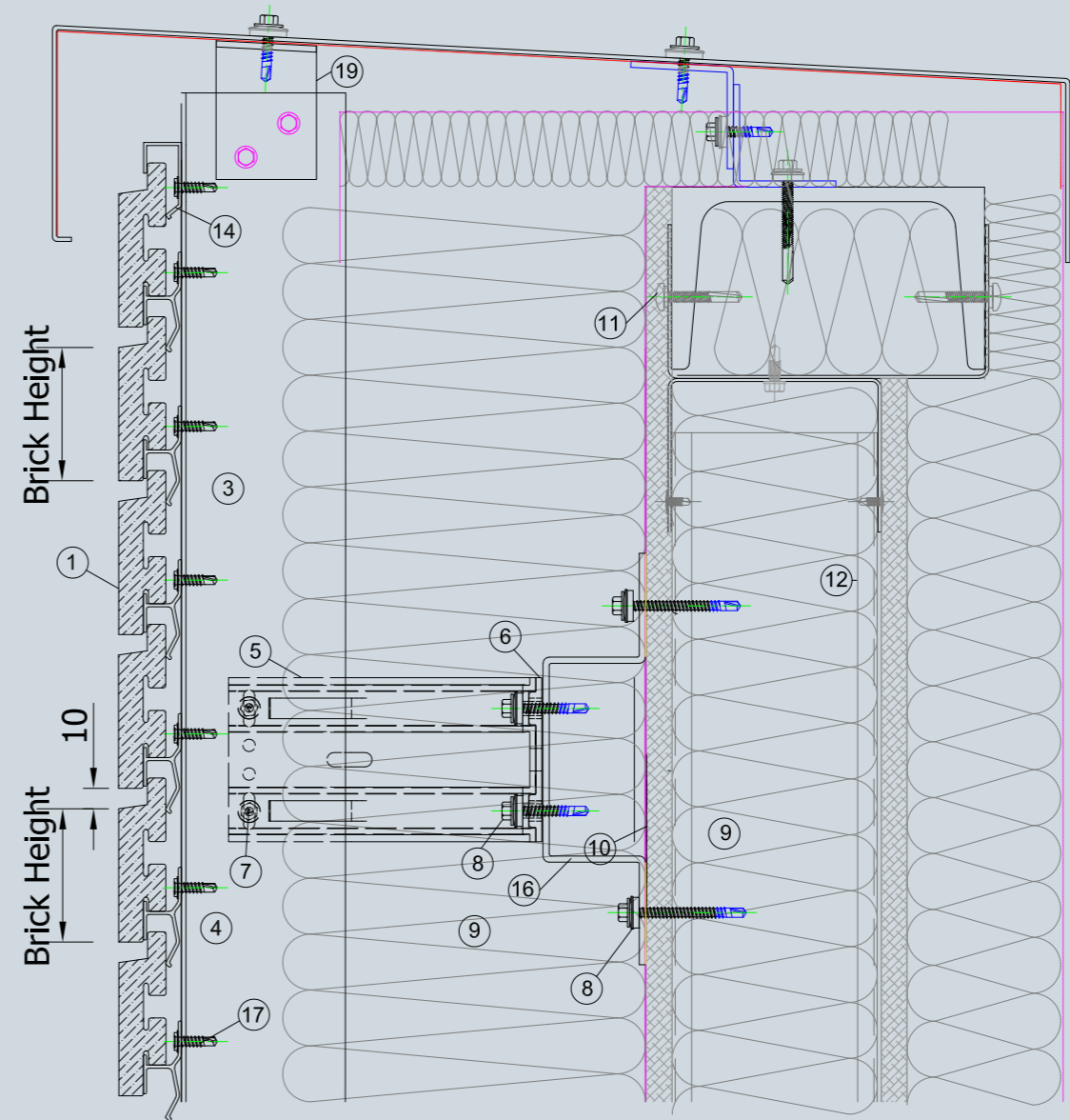
Note: All fixings, insulation and membranes indicated are for guidance only and need to be checked for each individual project.



> NX PARAPET JUNCTION

- ① NaturAL Brick
- ② Starter Rail
- ③ Brick Rail
- ④ Mullion
- ⑤ Wall Bracket
- ⑥ Thermal Pad
- ⑦ Bracket/Mullion Fix
- ⑧ Bracket/Wall Fix
- ⑨ Insulation
- ⑩ Membrane
- ⑪ Cementitious Board
- ⑫ A&L Steel Frame
- ⑬ Internal Finishes
- ⑭ Top Rail
- ⑮ Ventilated Section
- ⑯ Horizontal Rail
- ⑰ Rail/Mullion Fix
- ⑱ Reinforcement Angle
- ⑲ Cleat
- ⑳ Flashing

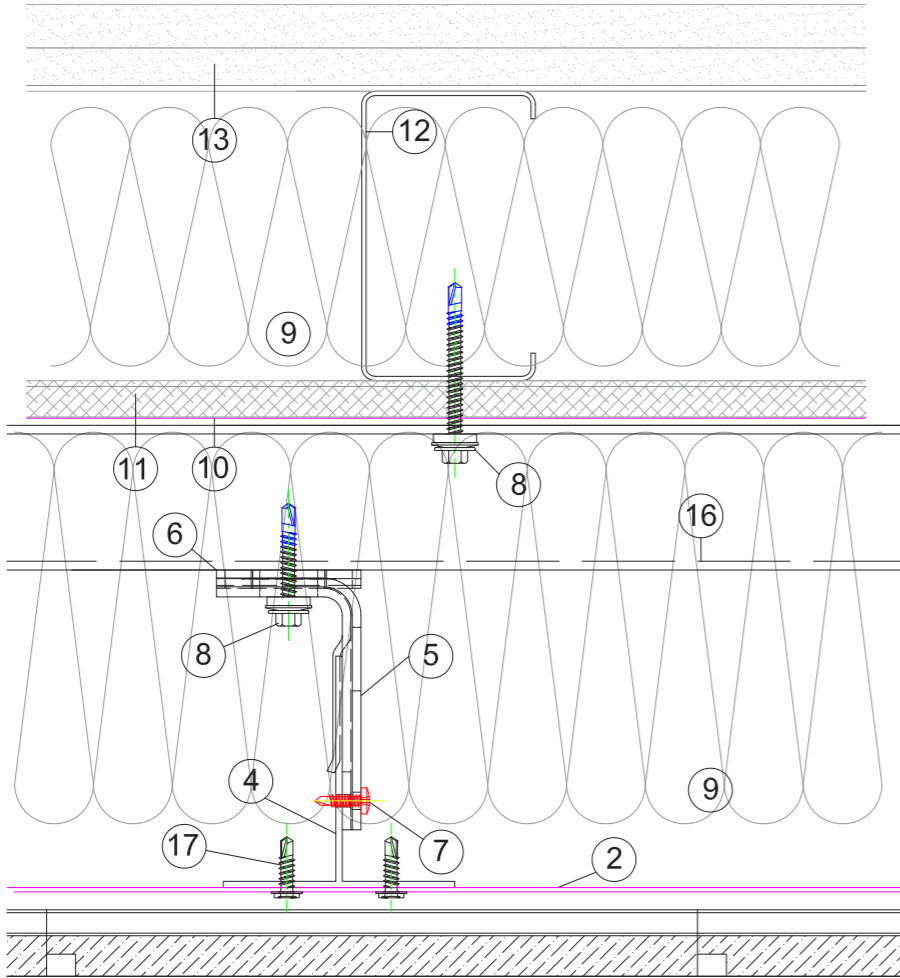
Note: All fixings, insulation and membranes indicated are for guidance only and need to be checked for each individual project.



> NX VERTICAL JOINT

- ① NaturAL Brick
- ② Starter Rail
- ③ Brick Rail
- ④ Mullion
- ⑤ Wall Bracket
- ⑥ Thermal Pad
- ⑦ Bracket/Mullion Fix
- ⑧ Bracket/Wall Fix
- ⑨ Insulation
- ⑩ Membrane
- ⑪ Cementitious Board
- ⑫ A&L Steel Frame
- ⑬ Internal Finishes
- ⑭ Top Rail
- ⑮ Ventilated Section
- ⑯ Horizontal Rail
- ⑰ Rail/Mullion Fix
- ⑱ Reinforcement Angle
- ⑲ Cleat
- ⑳ Flashing

Note: All fixings, insulation and membranes indicated are for guidance only and need to be checked for each individual project.



NATUR/L-X

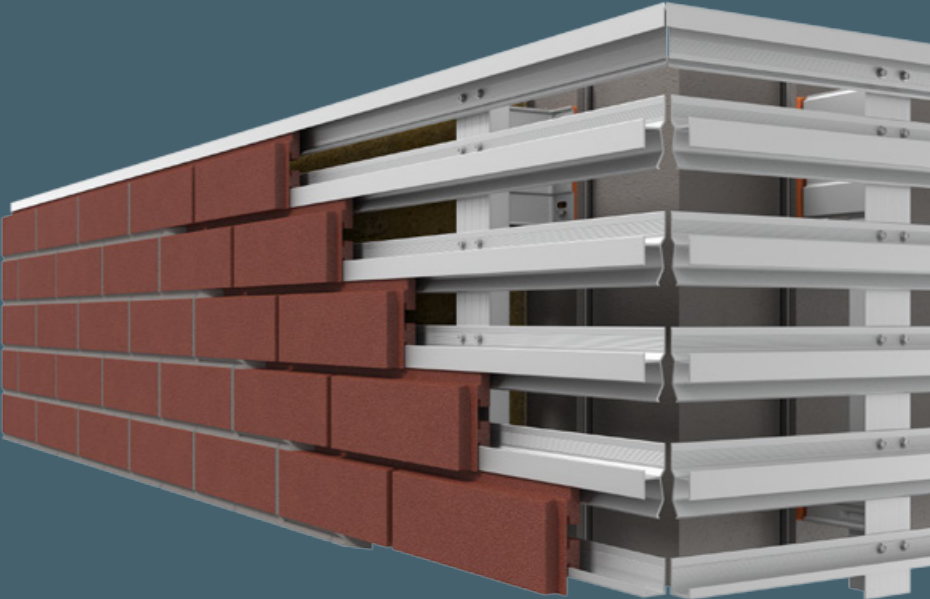
NATURAL-X

Are you keen to experience the substantial benefits NaturAL-X provides? Then our dedicated sales and technical teams are here to help. So, simply contact your local Ash & Lacy representative today.

DISCOVER MORE

Ash and Lacy Building Systems Ltd
Bromford Lane
West Bromwich
West Midlands B70 7JJ
T 0121 525 1444
F 0121 525 3444
E sales@ashandlacy.com

www.ashandlacy.com



HEAD OFFICE

Bromford Lane, West Bromwich
West Midlands B70 7JJ
T 0121 525 1444
F 0121 525 3444
E sales@ashandlacy.com

LONDON

Unit A, Davis Road Ind Park, Off Cox Lane
Chessington, Surrey KT9 1TD
T 0208 391 9700
F 0208 391 9701
E london@ashandlacy.com

GLASGOW

Unit 4B, Albion Trad Est, South Street
Glasgow G14 0SY
T 0141 950 6040
F 0141 950 6080
E glasgow@ashandlacy.com



NEATH - PORT TALBOT

Unit 4B, Sirius Drive
Rutherglen Centre
Baglan SA12 7BR
T 01639 812569
F 01639 813133
E porttalbot@ashandlacy.com

EXETER

Units 2&3 Gloucester Court
Heathpark Ind Est Honiton
Devon EX14 1SJ
T 01404 549100
F 01404 549440
E devon@ashandlacy.com

SMETHWICK

Alma Street
Smethwick B66 2RL
T 0121 558 8921
F 0121 565 1354
E sales@ashlacyperf.co.uk



APPROVED INSTALLER

MRC Group Pty Ltd
Johannesburg | Durban | Cape Town
W www.mrc-group.co.za
T +27 (0) 861 672 476
E info@mrc-group.co.za