

VISUAL

ASH & LACY



Ash & Lacy
Alma Street
Smethwick
B66 2RL
T 0121 558 8921
F 0121 565 1354
www.ashandlacy.com

THE THEORY OF MESH





Welcome to VisuAL, a series of bi-monthly magazines showcasing innovation within architectural mesh and perforated products ...exclusively from Ash & Lacy.

Victoria Way, London (pictured)

The 'THEORY OF MESH', the first in this series, highlights key areas for architects to consider when using mesh and perforated products.

We hope it helps to explain the real-life theory that lies behind the technical jargon.

VISUAL
ASH & LACY

Naturally, there are a number of key areas that need to be considered when creating a design. Those that allow you to match the architect's vision, and those that equally meet the structural and mechanical demands of the building. We'll cover each topic over the next 5 editions of VISUAL.



1

LIGHT & SHADE

The Art of Light Manipulation

Bold and striking, subtle and refined, see how natural and artificial light dramatically changes the impact of a perforated facade.



2

SCALE & DISTANCE

Size is Key

A considered approach to the effect of where and how we view perforated facades, an important factor too often overlooked in the design process.



3

MATERIALS, TEXTURES & FINISHES

Tactile Techniques

Feel the difference in materiality and understand how to manipulate the perfect finish by using specialist techniques.



4

DESIGN & IMAGES

Bold on Budget. Impact designs & image techniques

Realise the near limitless design opportunities that perforated facades offer. What can be achieved by using specialist technology and expert knowledge.

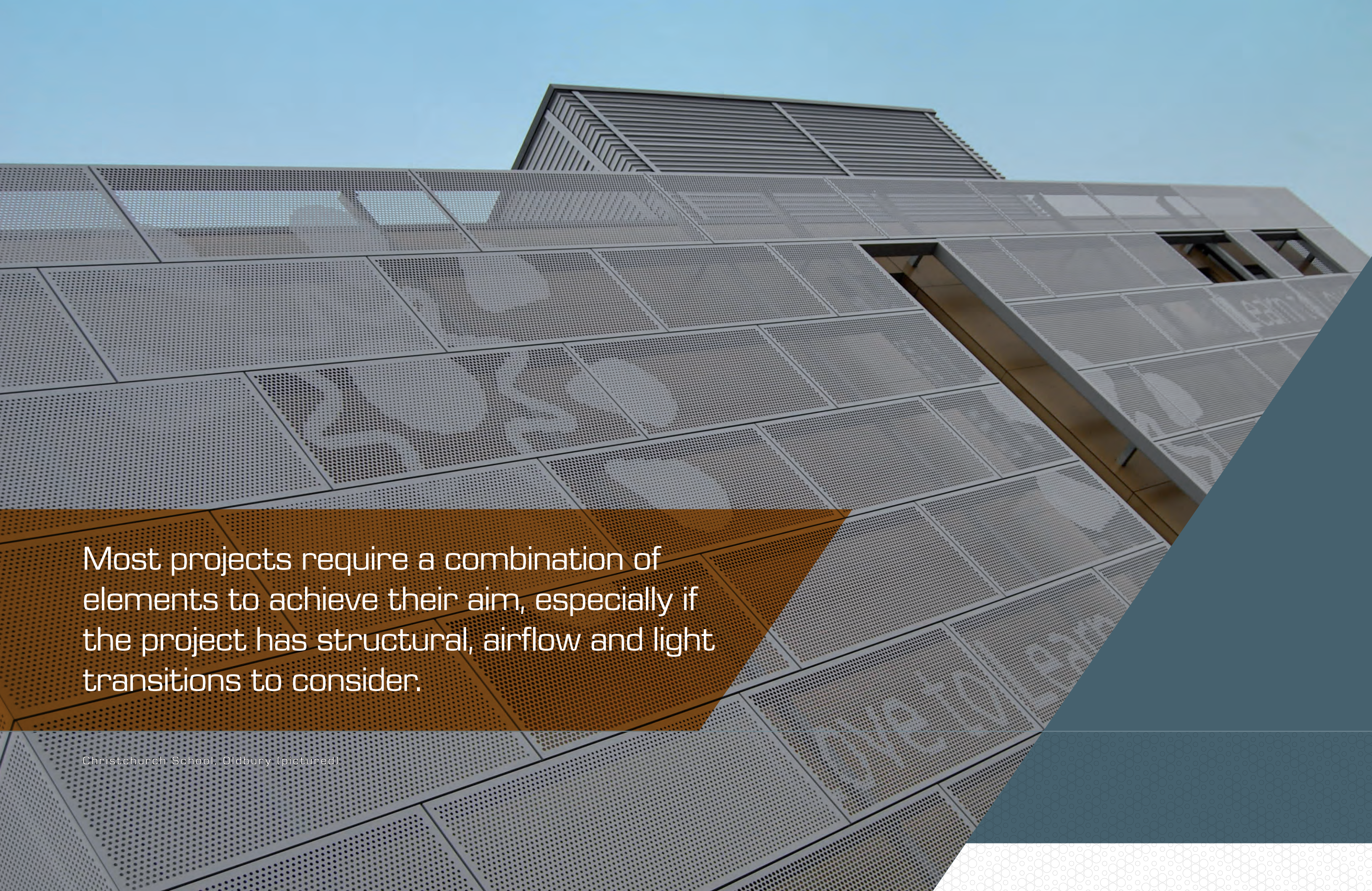


5

VENTILATION & ACOUSTICS

Taming your Environment

Perforations are more than a visual tool. They can be used to control acoustics and create the perfect atmosphere.



Most projects require a combination of elements to achieve their aim, especially if the project has structural, airflow and light transitions to consider.

Christchurch School, Oldbury (pictured)



Nandos Restaurants, Manchester

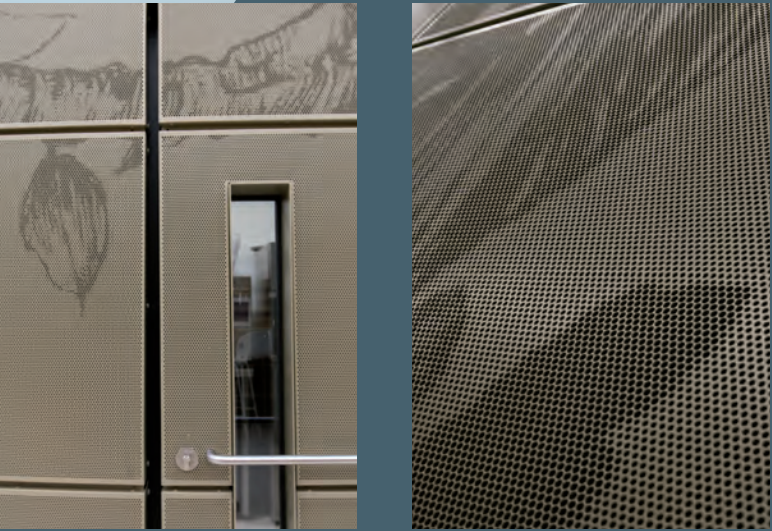
Then, of course, there's desire to create a strong visual impact.

Form is no longer subservient to function. Art and design can be an intrinsic part 'of' a building – ready to breathe life into every concept.



Quite simply, there is no 'standard detail' that applies to a perforated façade. Design options are virtually without limit.

Wellcome Centre, Cambridge (pictured)



Tree of Life, Wellcome Centre, Cambridge

You're now free to create unique pictures and patterns, or even use photo etching technology to 'print' an image using perforations.

Light is yours to manipulate at will. How much you use it, how far you push it is up to you. Whatever you decide, Ash & Lacy can help you make it a reality.



For over 25 years, Andy has been a technical specialist within Ash & Lacy working with Perforated and Expanded materials. Over the last 10 years he has been heavily involved with the specification of Mesh for Architecture.

Thanks to a keen understanding of CAD and concept creation, he is able to offer support to architects and designers, providing technical advice and assistance at every stage of development.

"The limit for architectural mesh is your imagination. I hope the Theory of Mesh will help inform, inspire and encourage you to explore its potential within your next project."

ANDY SCHUBERT
Technical Manager
0121 558 8921 / andy@ashandlacyperf.co.uk



APPROVED INSTALLER
MRC Group Pty Ltd
Johannesburg | Durban | Cape Town
W www.mrc-group.co.za
T +27 (0) 861 672 476
E info@mrc-group.co.za

The next issue of VisuAL explores 'Light & Shade' and will be available in March 2017. Sign up to register for your e-copy here.